

FROM MENTAL

Saltwood
Roomskins



Inspired by the organic patterns formed during the natural corrosion of metal, we created Saltwood. A variety of dispersing techniques are used to create a series of beautiful and unique panels. Similar to the spontaneous nature of the oxidisation process, each panel has its own exclusive aesthetic.

FRONT COVER IMAGE Saltwood in Cuprum
RIGHT-HAND IMAGE Saltwood in Kingsley



Similar to the variety of effects created by the spontaneous nature of the oxidation process, each panel has its own exclusive aesthetic.



IMAGE Close-up of Saltwood in Reef

Saltwood D020H

Fromental wallcoverings are hand-made to order. From supplied elevations and floor plan, we will provide a panel plan for your space to ensure optimal installation.

Technical Information

Installation

This all-over design is hand-painted onto individual silk panels, therefore the design will not join across panel seams. However, joins are usually well hidden within the complex pattern of the design. This is illustrated in the visual on the right.

Material and Technique

Hand-painted on paper-backed silk.

Dimensions

Height - Panels are supplied 150mm/6" higher than specified wall height. Standard panel height is up to 4300mm/14ft. Panels over the standard height are available with a surcharge.

Width - Standard panel width 915mm/36" plus 15mm/1/2" trim

Hung Horizontally



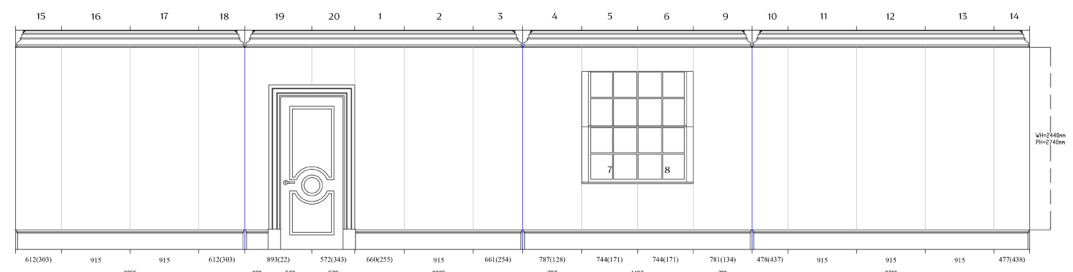
Hung Vertically



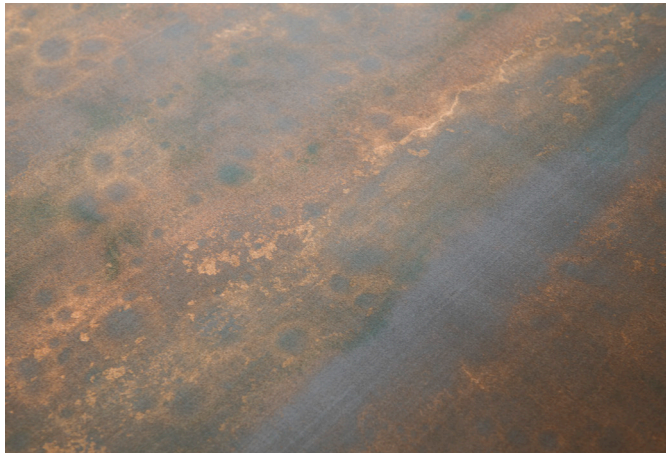
Example Corner Join (Hung Vertically)



Example Panel Plan (Hung Vertically)



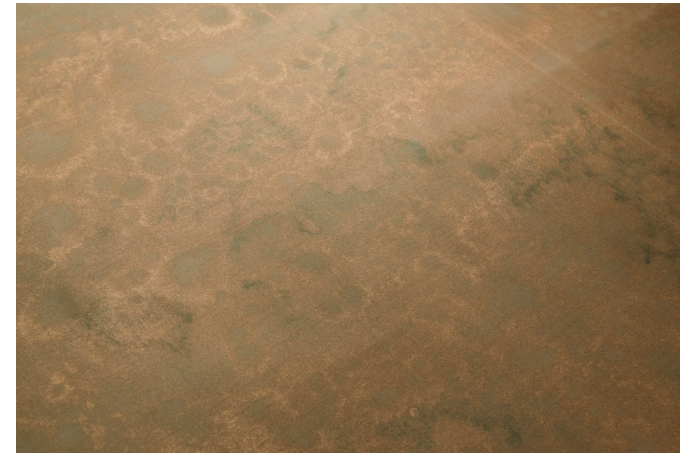
Colourways



01 **Brackish** on Elephant Silk



02 **Kingsley** on Opal Strata Silk



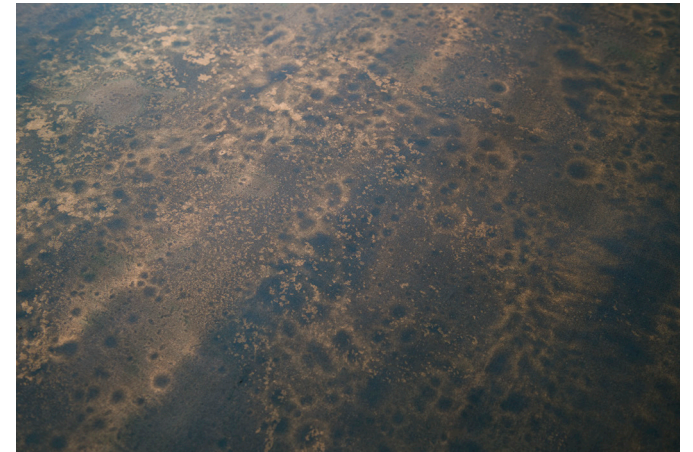
03 **Delta** on Kalahari Silk



04 **Ingenii** on Steel Silk



05 **Cuprum** on Taro Silk



06 **Reef** on Stellar Silk

FROMENTAL



Saltwood in Ingenii