

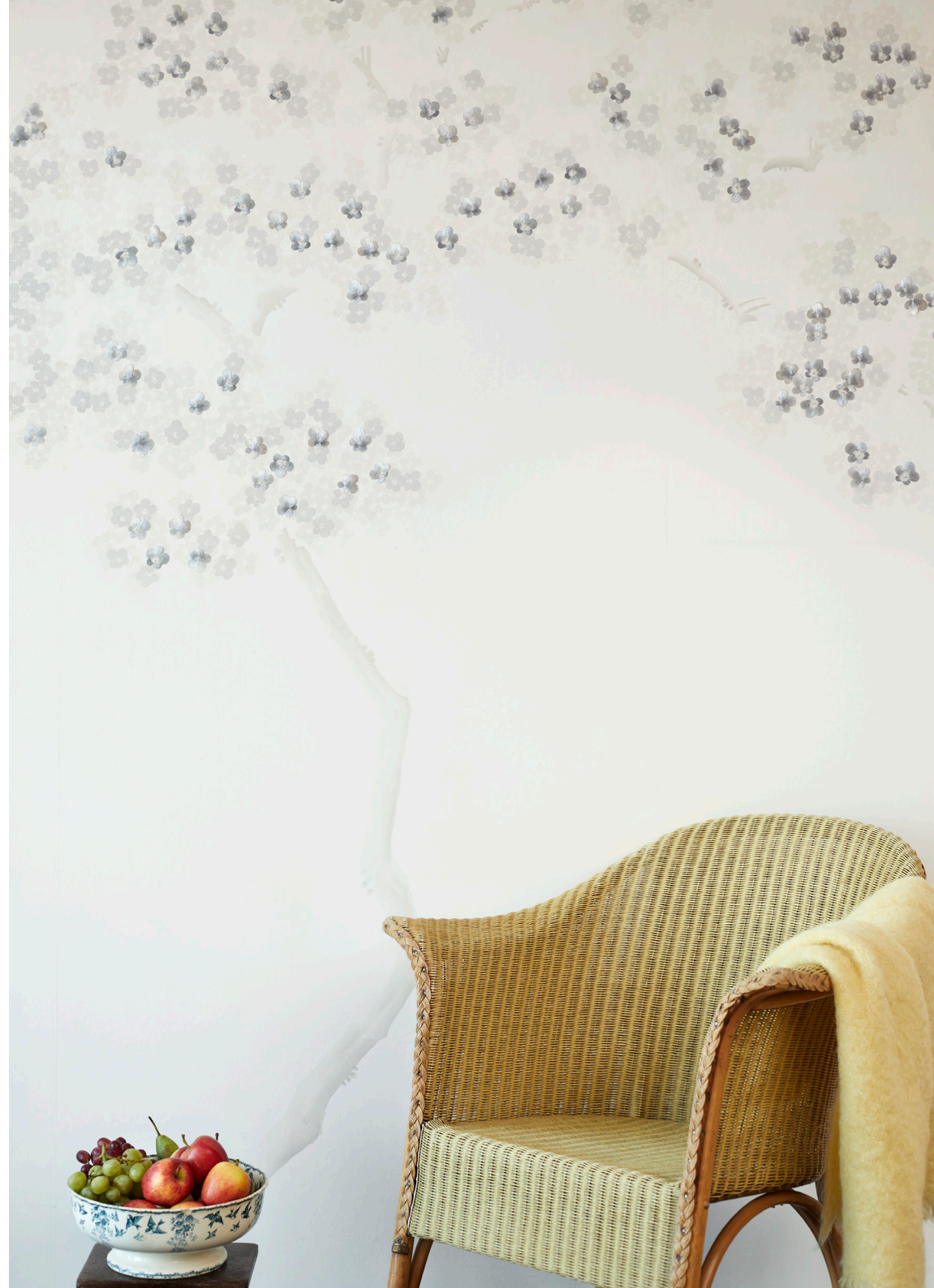


FROMENTAL

Nimbus
Modern Chinois

Taking inspiration from the delicate petals of cherry blossoms in full bloom, washes of paint are overlaid forming a ghostly layer of blossoms. This becomes a subtle backdrop for the stunning hand-embroidered blossoms to take centre stage. This layering of painting and embroidery adds an understated, yet powerful depth, resulting in a stunning statement of elegance.

FRONT COVER IMAGE Nimbus in Custom Colour on Mercury Strata
Photo credit: Steve Russell Studios
RIGHT-HAND IMAGE Nimbus in Zonda



The detailed embroidery of carefully selected individual blossoms creates a beautiful composition. This delivers an exquisitely multi-dimensional effect.



IMAGE Close-up of Nimbus in Khamsin

Nimbus E017

Fromental wallcoverings are hand-made to order, tailored for each room. From supplied elevations and floor plan, we will place the design and panel seaming to ensure optimal installation.

Technical Information

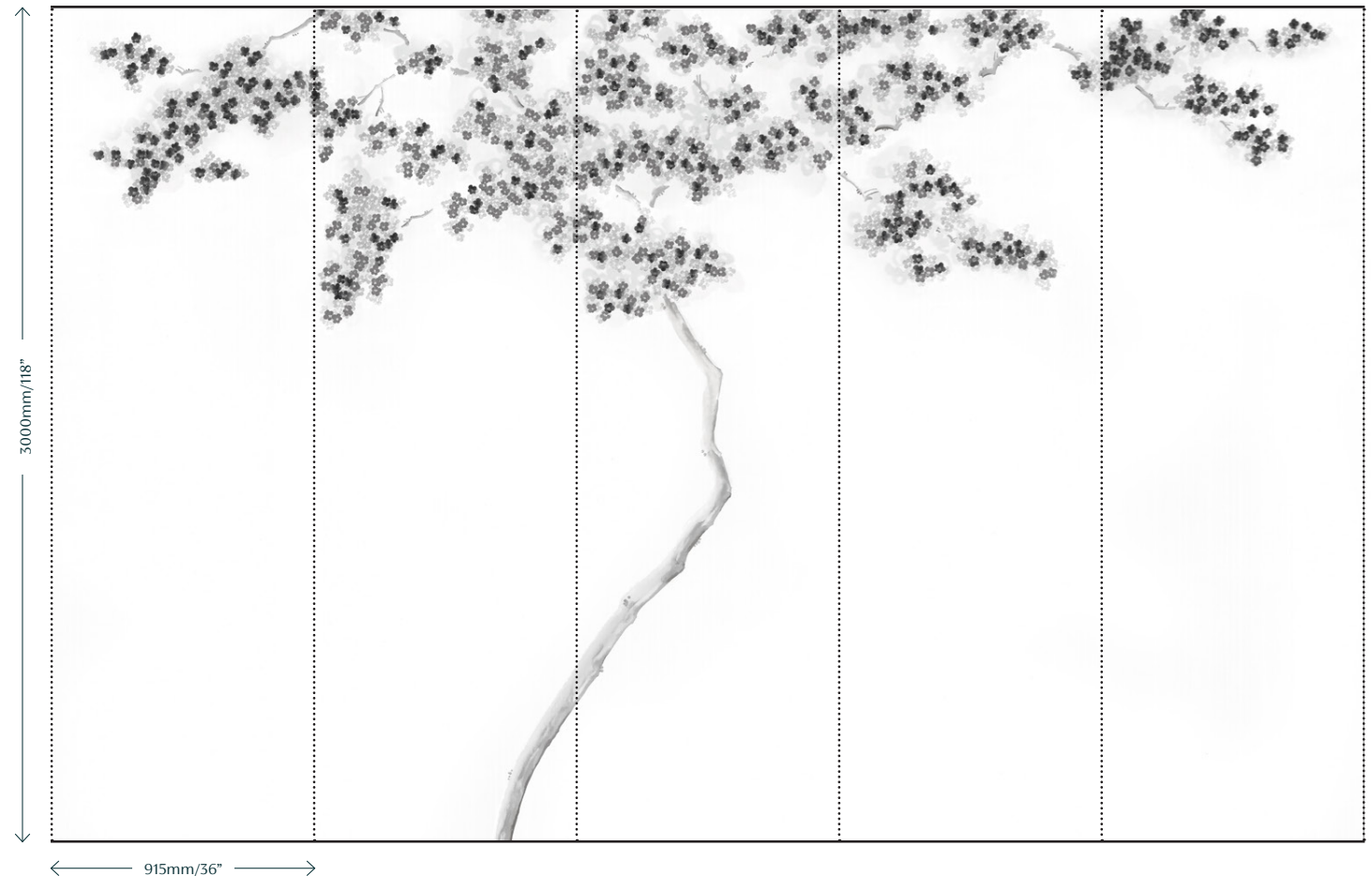
Material and Technique

Hand-painted and hand-embroidered on paper-backed silk.

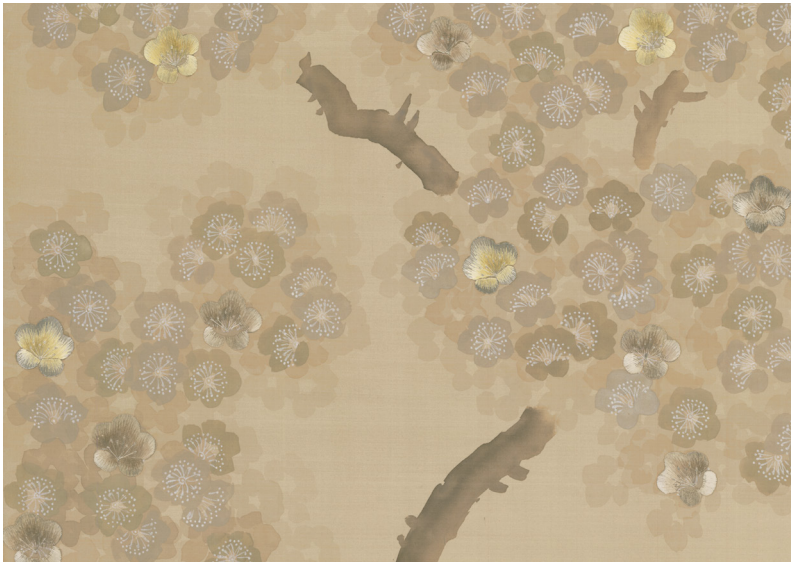
Dimensions

Height - Panels are supplied 300mm/12" higher than specified wall height. Standard panel height is up to 4300mm/14ft. Taller panels are available with a surcharge.

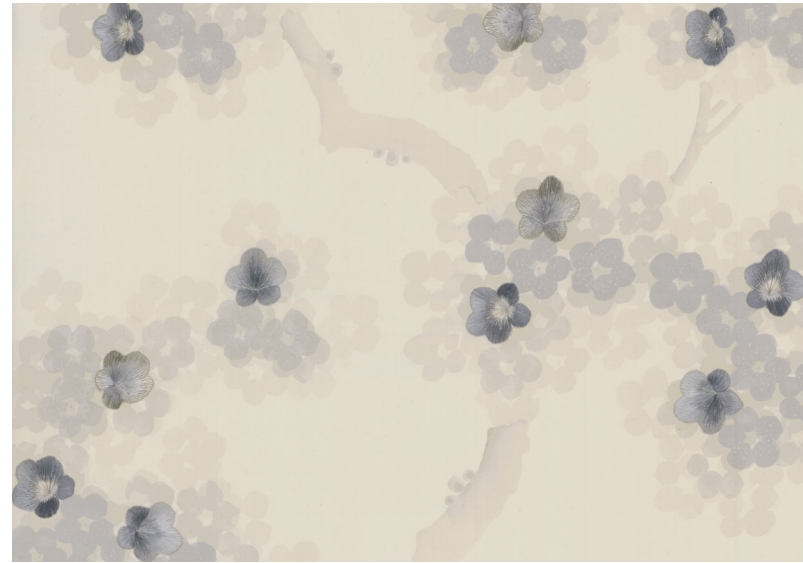
Width - Standard panel width 915mm/36" plus 15mm/ 1/2" trim.



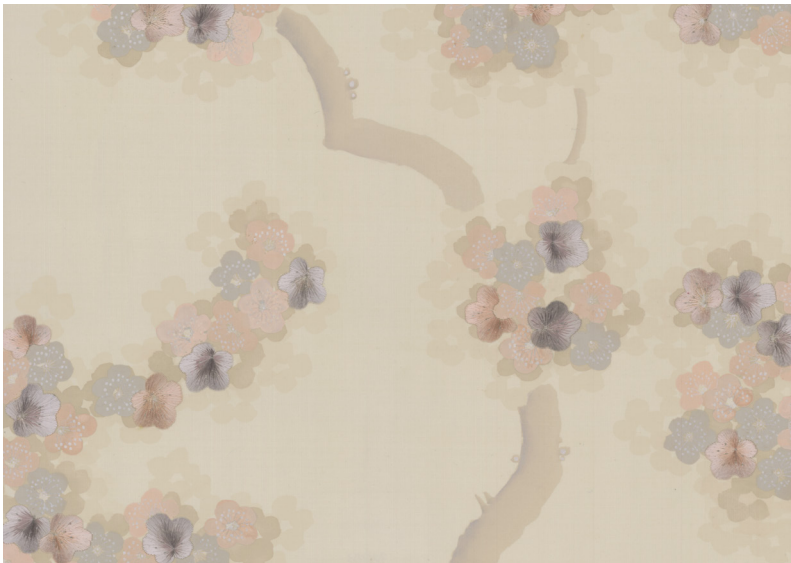
Colourways



01 **Sillage** on Mercury Strata



03 **Zonda** on White Silk



05 **Khamsin** on Moonlight Silk



06 **Scirocco** on Cort Dupion

FROMENTAL



Nimbus in Scirocco