



FROMENTAL

Ansu

Modern Chinois

Inspired by the ever-popular Prunus tree, Ansu is a confident and bold depiction of the typically delicate blossom tree. Featuring a beautifully overblown peach tree and rendered in our Cloisonné style, Ansu is vivid and graphic, without being overly embellished.

FRONT COVER IMAGE Ansu in Loring
Credit: Antiques supplied by Lorford Antiques
RIGHT-HAND IMAGE Ansu in Red Baron
Credit: Michael Partenio



Ansu's signature aesthetic is the delicate use of raised gesso, available in a range of different colourways, from bright and bold to soft and muted. The effect is both versatile and distinctive.



IMAGE Close-up of Ansu in Loring

Ansu F018

Fromental wallcoverings are hand-made to order, tailored for each room. From supplied elevations and floor plan, we will place the design and panel seaming to ensure optimal installation.

Technical Information

Material and Technique

Hand-painted with raised gesso onto paper-backed silk.

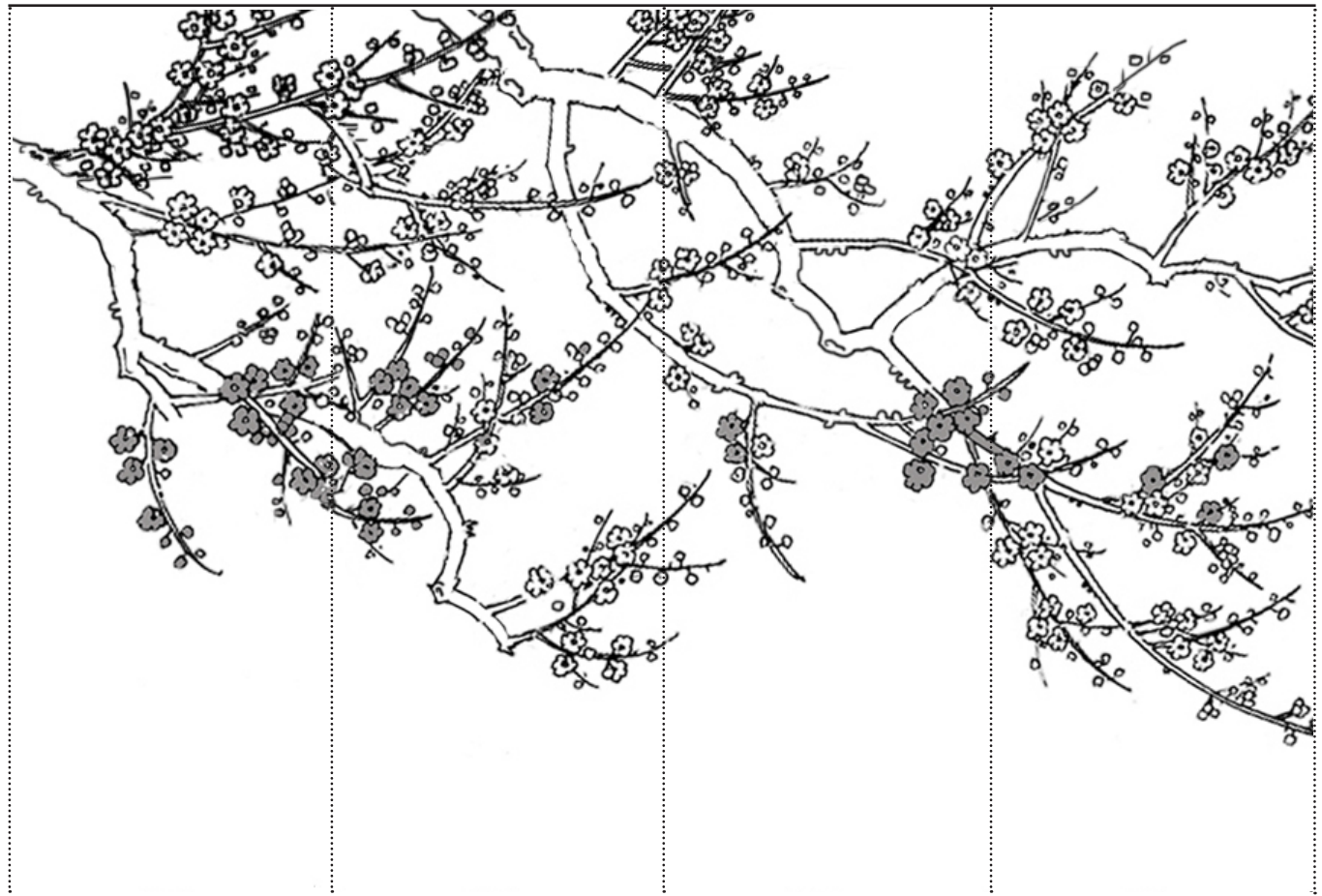
Dimensions

Height - Panels are supplied 300mm/12" higher than specified wall height. Standard panel height is up to 4300mm/14ft. Taller panels are available with a surcharge.

Width - Standard panel width 915mm/36" plus 15mm/ 1/2" trim.



2400mm/94"

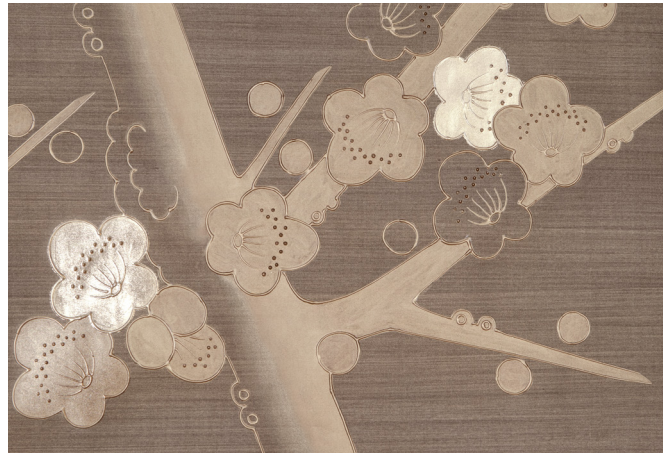


915mm/36"

Colourways



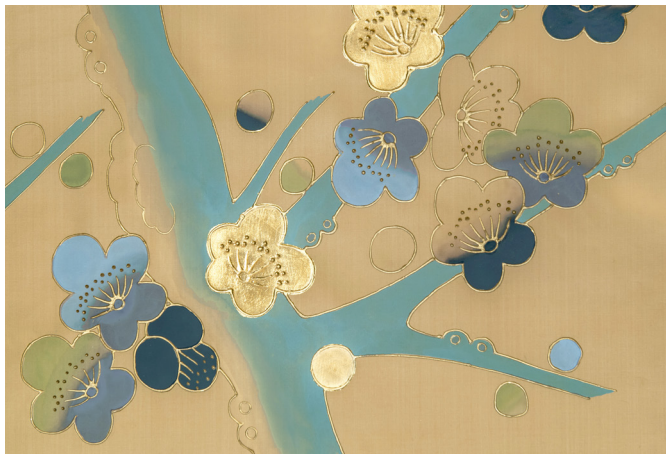
01 **Loring** on Bronze Silk



02 **Melba** on Pyrite Strata



03 **Nectar** on Pebble Silk



04 **Santa Barbara** on Sahara Silk



05 **Red Baron** on Graphite Silk

FROMENTAL



Ansu in Santa Barbara