

FROMENTAL



RAW
Lumière



Inspired by Maresca Interiors's collection of Brazilian modern tapestries, RAW is intended to give the viewer a sense of immersion. Representing the concept of pure, untrained creativity and thought; the limbo of the mind and unchanneled reason.

FRONT COVER IMAGE RAW in Ouro
Credit: Benjamin McMahon
RIGHT-HAND IMAGE RAW in Ether



The variety of brush stroke combinations and contrasting tones give volume and form to the space, resulting in a stunning visual tour de force.



IMAGE Close-up of RAW in Cinza

RAW L008

Fromental wallcoverings are hand-made to order, tailored for each room. From supplied elevations and floor plan, we will place the design and panel seaming to ensure optimal installation.

Technical Information

Material and Technique

Hand-painted onto hand-brushed linen, hand-gilded paper or hand-brushed Papyri paper.

Dimensions

Height - Panels are supplied 300mm/12" higher than specified wall height. Standard panel height is up to 4300mm/14ft. Panels over the standard height are available with a surcharge.

Width - Standard panel width 915mm/36" plus 15mm/½" trim



Colourways



01 **Gilberto** on Hand-Brushed Linen



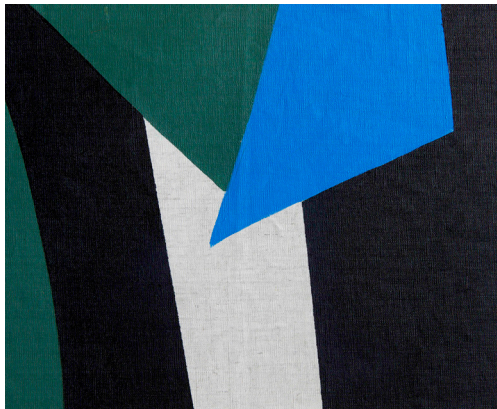
03 **Cinza** on Hand-Brushed Papyrus Paper



04 **Ouro** on Hand-Gilded Paper



05 **Preto** on Hand-Brushed Papyrus Paper



06 **Verde** on Hand-Brushed Linen



07 **Amarelo** on Hand-Brushed Papyrus Paper



08 **Branco** on Hand-Brushed Linen



09 **Ether** on White Silk

FROM MENTAL



Raw in Gilberto