

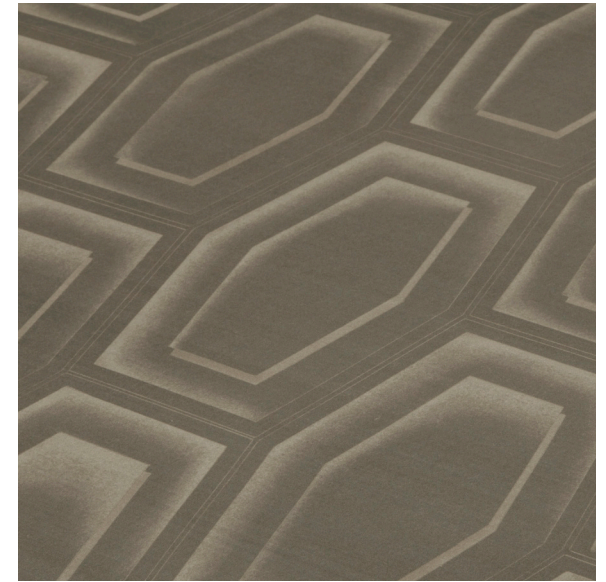
ref. MB05-01n

col. bronze



ref. MB05-02n

col. chrome



ref. MB05-03n

col. atomic



ref. MB02-04c

col. chalk



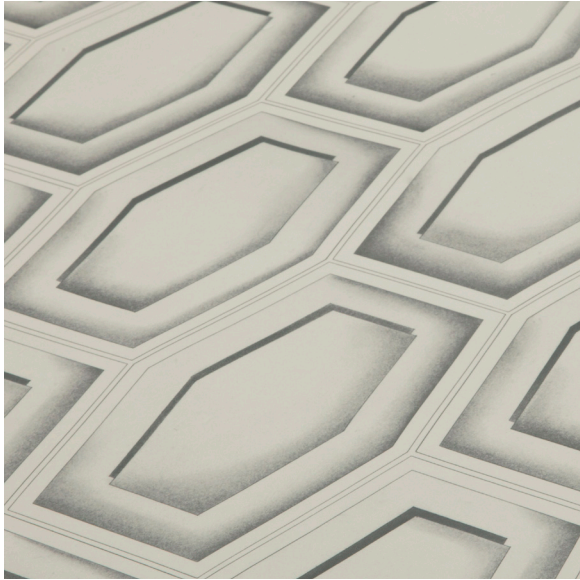
ref. MB05-05n

col. opal



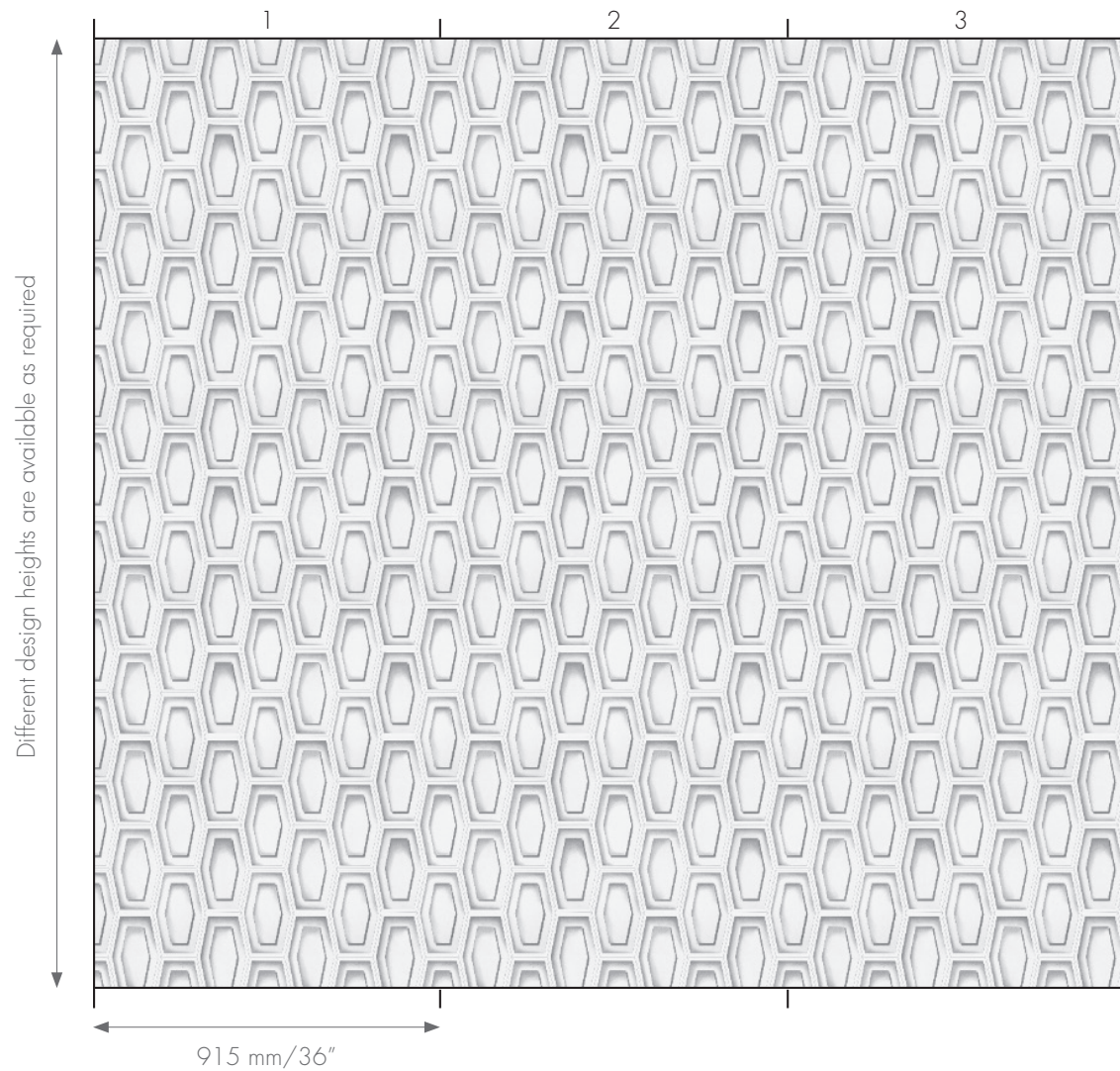
ref. MB05-06n

col. sepia



ref. MB05-07c

col. charcoal



Stamped steel patterns recall the fabulous Machine Age of Trans-Atlantic traveling as well as Art Deco skyscraper design.

Application: anywhere overall pattern coverage is needed. Baths, kitchens, bar fronts, hallways, etc.

Ground Options:

Nacre: Paper substrate with hand-brushed metallic glaze striation.

Cartridge Paper: Matte white archival paper with subtle texture.

Ground Options

Nacre: paper substrate with hand-brushed metallic glaze striation.

Substrate width: 1050mm (42")

Usable width: 915mm (36")

Faux Linen: Matte embossed vinyl canvas with linen texture (commercial/hospitality grade).

Substrate width: 1300 mm (51")

Usable width: 1200mm (47")

Cartridge Paper: Matte white archival paper with subtle texture.

Substrate width: 1050mm (42")

Usable width: 915mm (36")

Ordering Guide

Supplied as panels on a roll. Client must specify panel height and number of panels required.

Customising color

The background color of an existing colorway can be changed. There will be fee for this, which will include sampling.

To create an entirely new custom color, there will be a flat fee charge, which will include sampling.

For all pricing, please contact our Sales team.

Lead-times

Custom Color Sample: 1-2 weeks

General Production: All orders are made on request, we do not store any items. Approx lead time 5-6 weeks

Note: All times noted above are from receipt of deposit payment and are subject to change, depending on order quantity and production schedule.