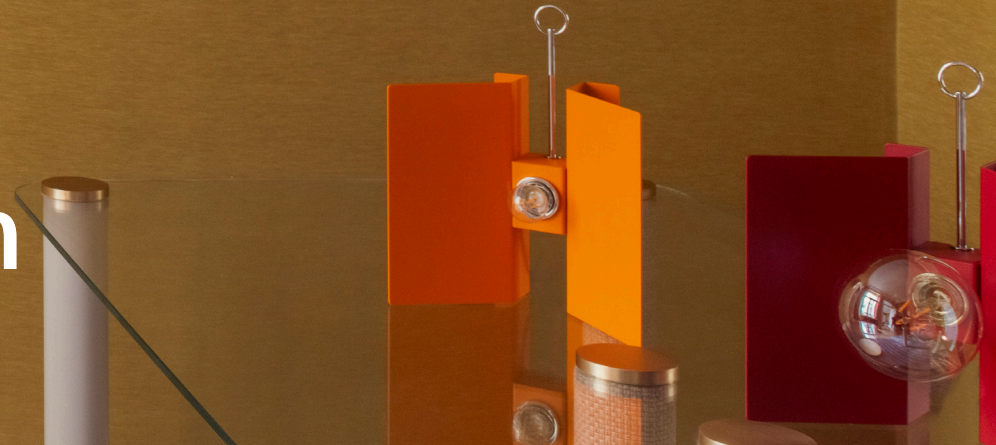


FROM MENTAL



Molten
Ratio

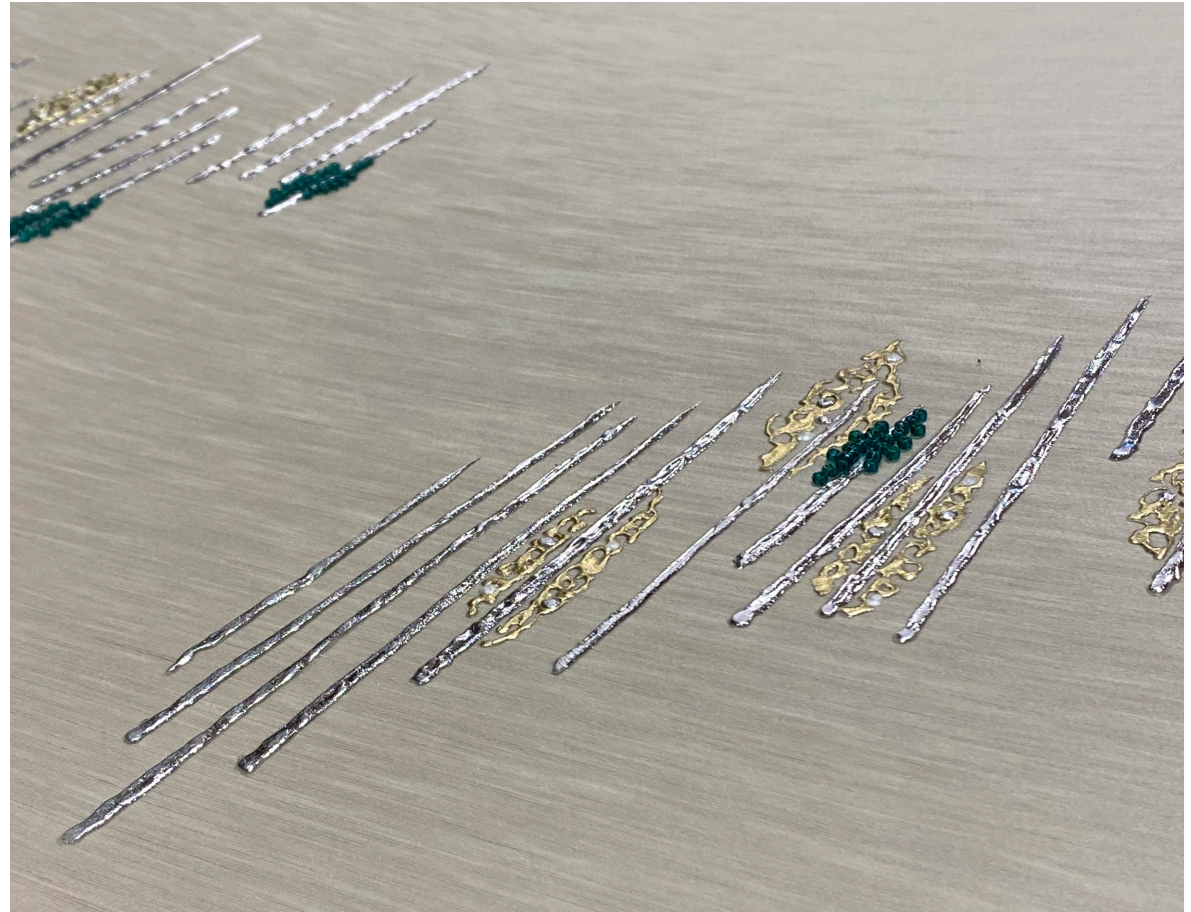


Molten draws direct inspiration from a specific ring crafted by Andrew Grima, a beloved possession of our co-founder, Lizzie. This collection offers a brutalist interpretation of nature, skilfully brought to life through three-dimensional foil work. The intricate beading mimics the appearance of rough-cut gems, adding a unique touch to the design.



“Of all the vision-inducing arts that which depends most completely on its raw materials is, of course, the art of the goldsmith and jeweller... And when to this natural magic of glinting metal and self-luminous stone is added the other magic of noble forms and colours artfully blended, we find ourselves in the presence of a genuine talisman.”

Aldous Huxley, The Doors of Perception



Molten R055

Fromental wallcoverings are hand-made to order, tailored for each room. From supplied elevations and floor plan, we will place the design and panel seaming to ensure optimal installation.

Technical Information

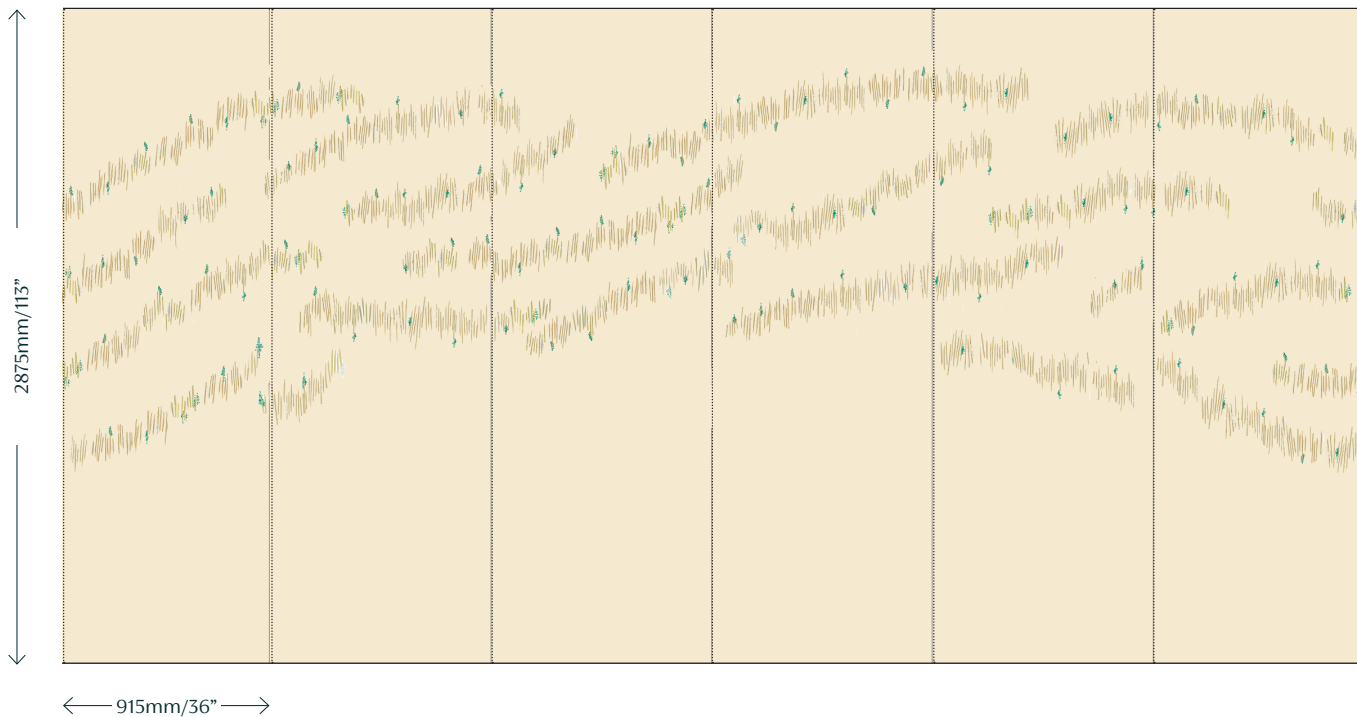
Material and Technique

Hand-Foiled and Hand-Embroidered on Faille Silk Linen

Dimensions

Height - Panels are supplied 150mm/6" higher than specified wall height. Standard panel height is up to 4300mm/14ft. Taller panels are available with a surcharge.

Width - Standard panel width 915mm/36" plus trim.



Colourways



01 Huxley Hand-Foiled and Hand-Embroidered on Woodbine Faille
Hand-painted onto our slubby Woodbine silk/linen mix, Huxley features warm gold foiling with Japanese glass beads representing emeralds.



02 Blake Hand-Foiled and Hand-Embroidered on Pearl Grey Faille
Blake is hand-painted onto our Pearl Grey silk/linen mix and features silver foiling with Japanese glass beads.

FROMENTAL

