

FROM MENTAL

Kinetic  
Ratio





Taking inspiration from the work of the 1950's British Constructivists, the design Kinetic is an elegant interplay of different varying shapes set against their shadows and reflections. The mixture of gilding, metallic and flat paints on silk gives Kinetic an ethereal quality of foil in motion, where sculpture meets shadow to create a sophisticated backdrop for any interior.

COVER IMAGE Kinetic in Martin on Pumice Silk  
RIGHT-HAND IMAGE Kinetic in Pasmore on Graphite Silk



Meticulously hand-painted and gilded on silk.



IMAGE Close-up of Gabo on Bayou Silk

# Kinetic Z015H

Fromental wallcoverings are hand-made to order, tailored for each room. From supplied elevations and floor plan, we will place the design and panel seaming to ensure optimal installation.

## Technical Information

### Placement

Kinetic is a carefully balanced geometric. Where possible we will place the shapes so that they are not cut top and bottom. It is standard practice for shapes to be cut at wall breaks, e.g windows and door frames. The pattern repeats after 4 panels.

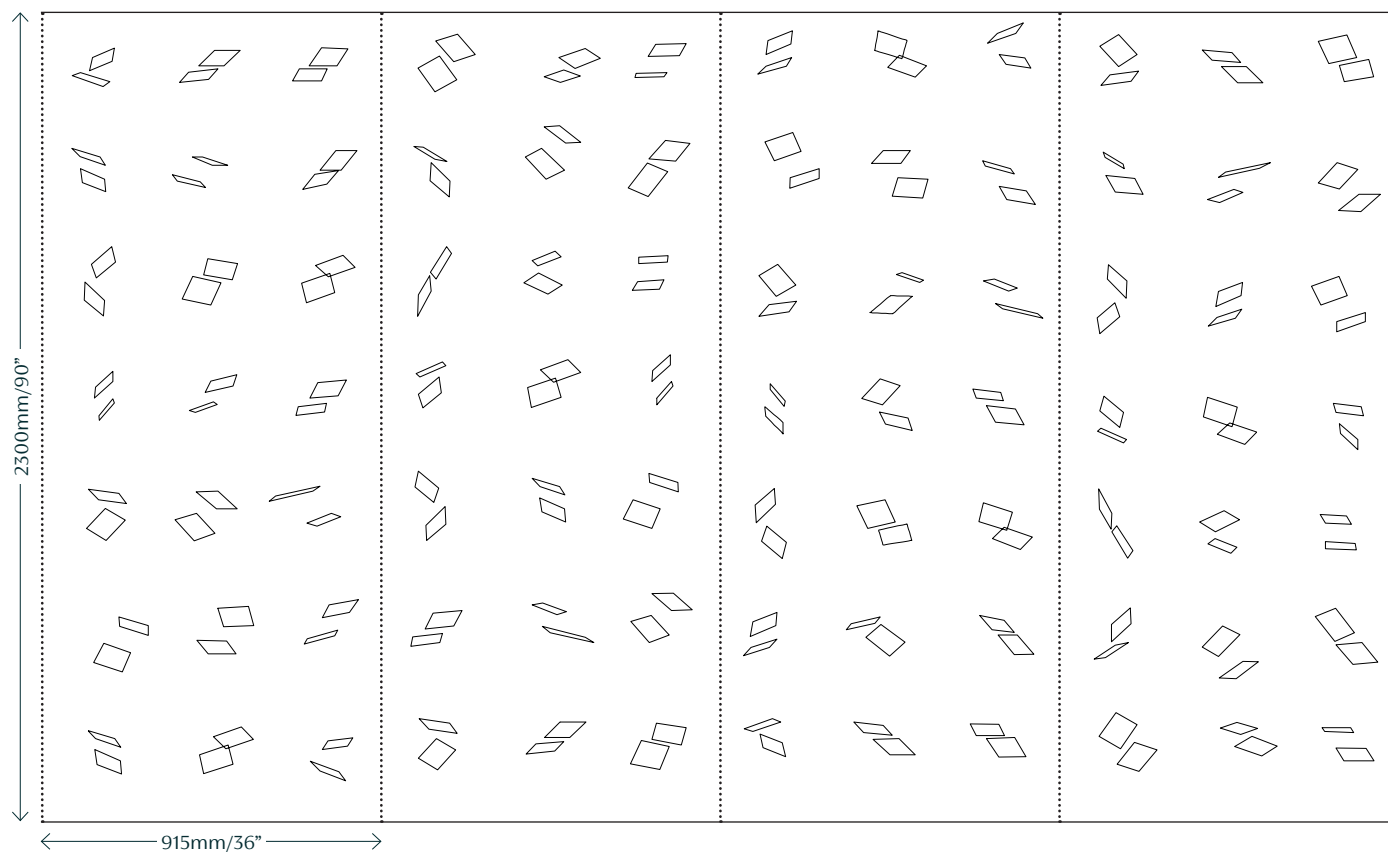
### Material and Technique

Hand-painted and gilded on paper backed silk.

### Dimensions

**Height** - Panels are supplied 300mm/12" higher than specified wall height. Standard panel height is up to 4300mm/14ft. Panels over the standard height are available with a surcharge.

**Width** - Standard panel width 915mm/36" plus 15mm/1/2" trim.





# Colourways



01 **Martin** on Pumice Silk



02 **Pasmore** on Graphite Silk



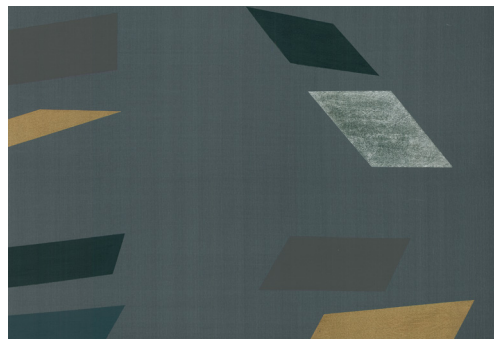
03 **Hepworth** on Mercury Strata



04 **Malevich** on Cardigan Silk



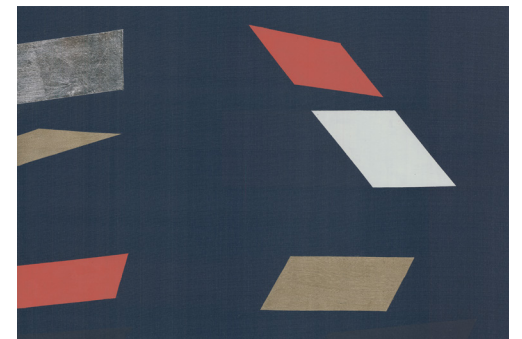
05 **Albers** on Mademoiselle Silk



06 **Gordin** on Stellar Silk



07 **Roszak** on Pumice Silk



08 **Gabo** on Bayou Silk

# FROMENTAL



Martin on Pumice Silk