

FROMENTAL



# Madame Chrysanthème

Modern Chinois



The noble Chrysanthemum is revered as a symbol of happiness and vitality throughout Asia. The graphic yet ornamental design wraps around a room following a gentle, meandering path.

FRONT COVER IMAGE Madame Chrysanthème in Lola  
RIGHT-HAND IMAGE Madame Chrysanthème in Lola  
Credit: Styled by Alyce Taylor | Photo Credit: Chris Everard



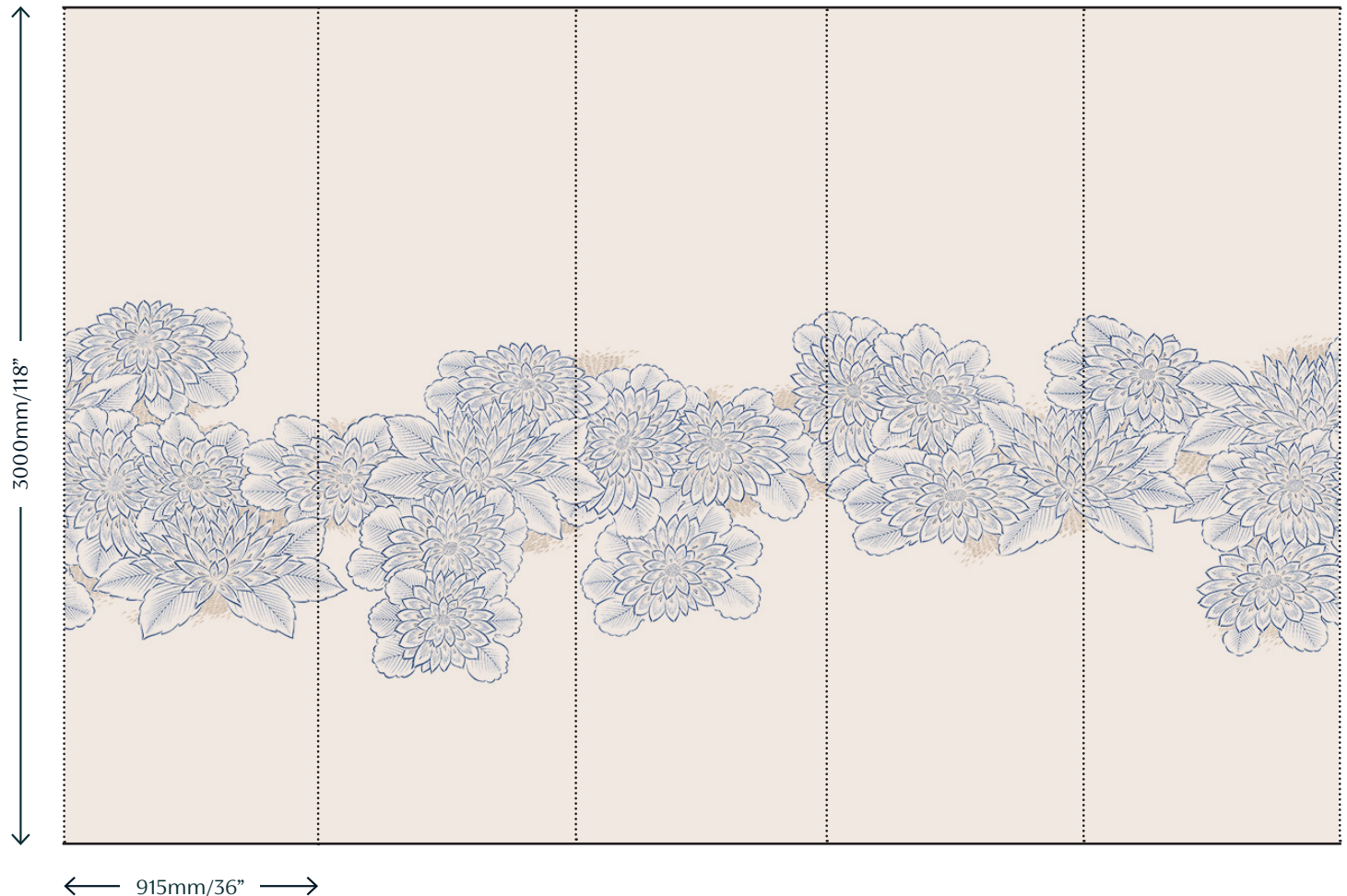
Use it in Honeyglow above a dado rail to introduce considered decoration to a simple sitting room or bedroom scheme, or let it hug the skirting in Chiffon for eye-catching effect in a dining room or hall.



# Madame Chrysanthème A005

Fromental wallcoverings are hand-made to order, tailored for each room. From supplied elevations and floor plan, we will place the design and panel seaming to ensure optimal installation.

A005 Panel Plan



## Technical Information

### Material and Technique

Our Madame Chrysanthème design is available hand-painted onto silk

### Dimensions

#### Silk Background

Panel Width - 915mm/36" plus 15mm/ 1/2" trim.

Panels can be purchased as a straight run or tailored to fit. Standard panel height is 3m. Tailored panels are supplied 300mm/12" higher than specified wall height.

# A005 - HOW TO ORDER

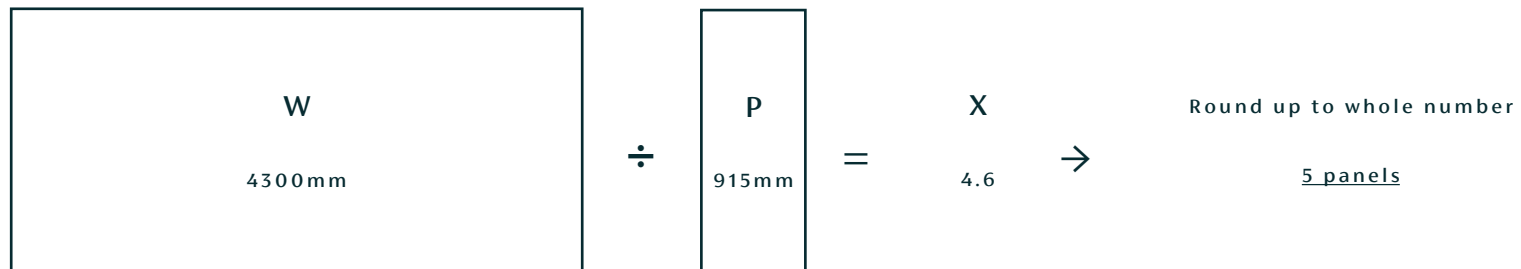
## SELECT YOUR COLOURWAY



## MEASURE YOUR SPACE

Measure your wall width or room perimeter (W)  
Divide this number by the panel width of your selected design (P)  
This is the number of panels you need to order (X)

Example:



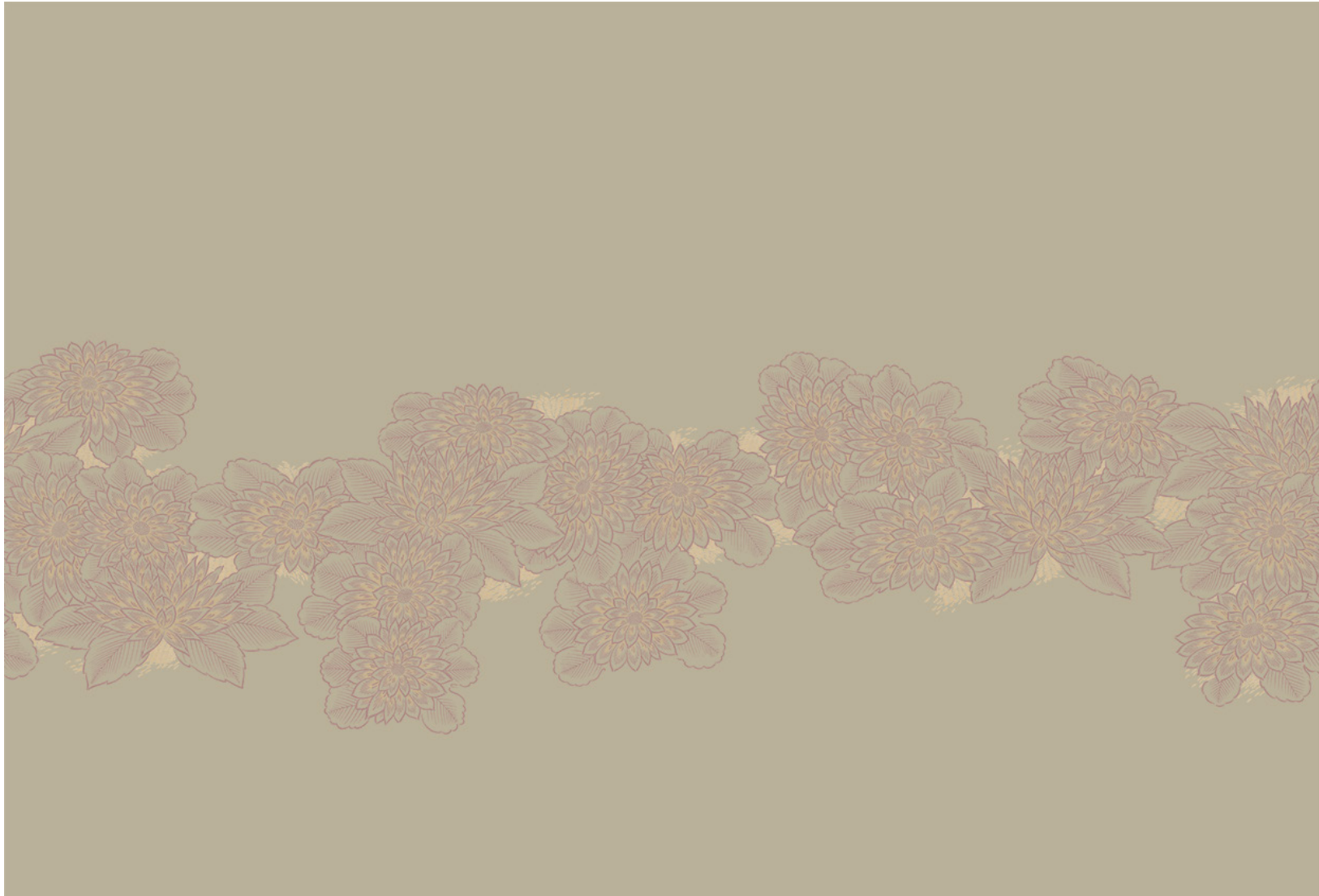
## PLACE YOUR ORDER

# FROMENTAL



01 Lola

# FROM MENTAL



02 Mansetta Sunset

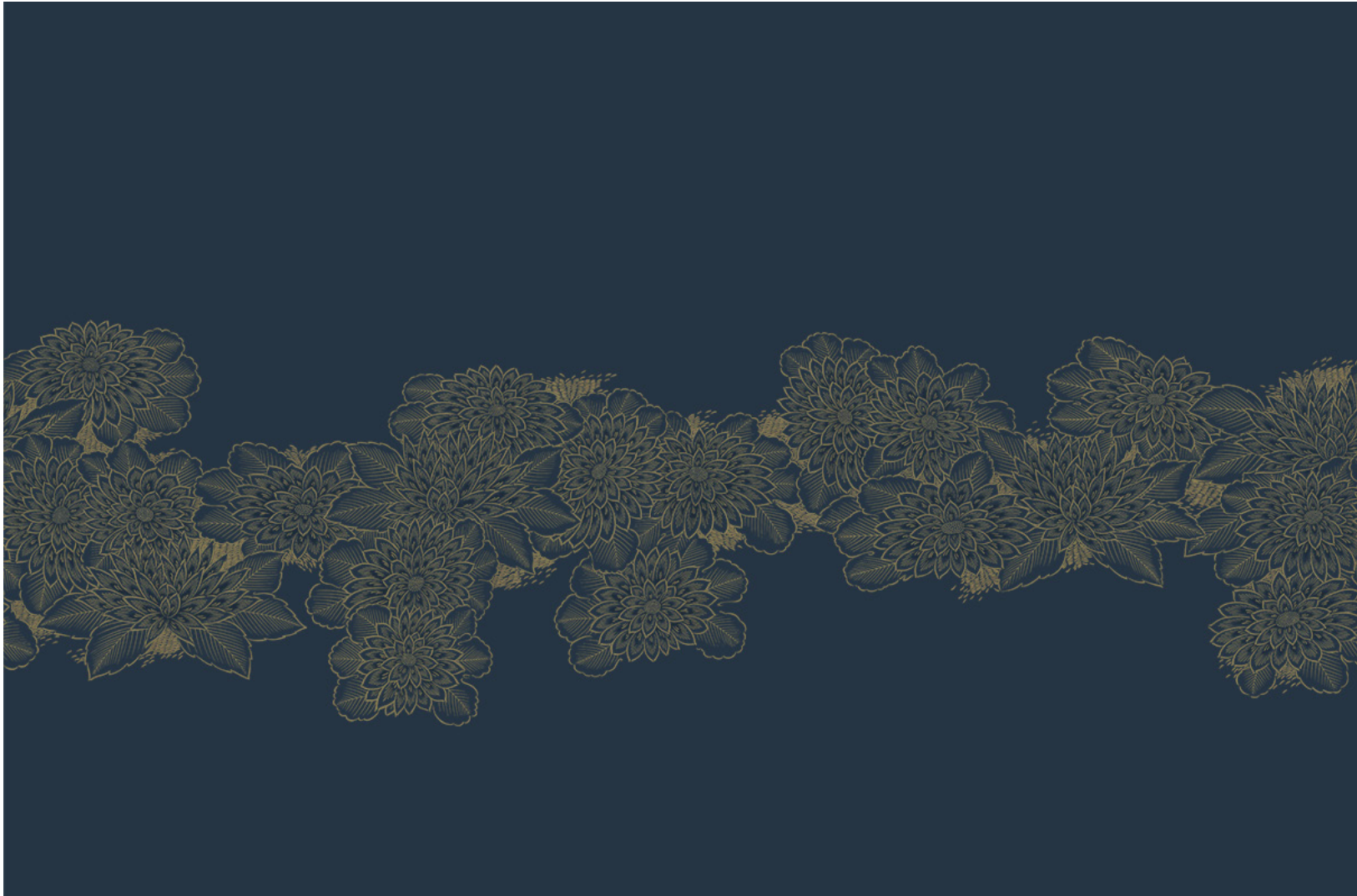
# FROM MENTAL



03 Honeyglow



# FROMENTAL



04 Chiffon