

FROMENTAL



Madame Chrysanthème

Modern Chinois



The noble Chrysanthemum is revered as a symbol of happiness and vitality throughout Asia. The graphic yet ornamental design wraps around a room following a gentle, meandering path.

FRONT COVER IMAGE Madame Chrysanthème in Lola
RIGHT-HAND IMAGE Madame Chrysanthème in Lola
Credit: Styled by Alyce Taylor | Photo Credit: Chris Everard



Use it in Honeyglow above a dado rail to introduce considered decoration to a simple sitting room or bedroom scheme, or let it hug the skirting in Chiffon for eye-catching effect in a dining room or hall.



Madame Chrysanthème A005

Fromental wallcoverings are hand-made to order, tailored for each room. From supplied elevations and floor plan, we will place the design and panel seaming to ensure optimal installation.

Madame Chrysanthème is available using two different production techniques:

A005H- Fully hand-painted onto Silk

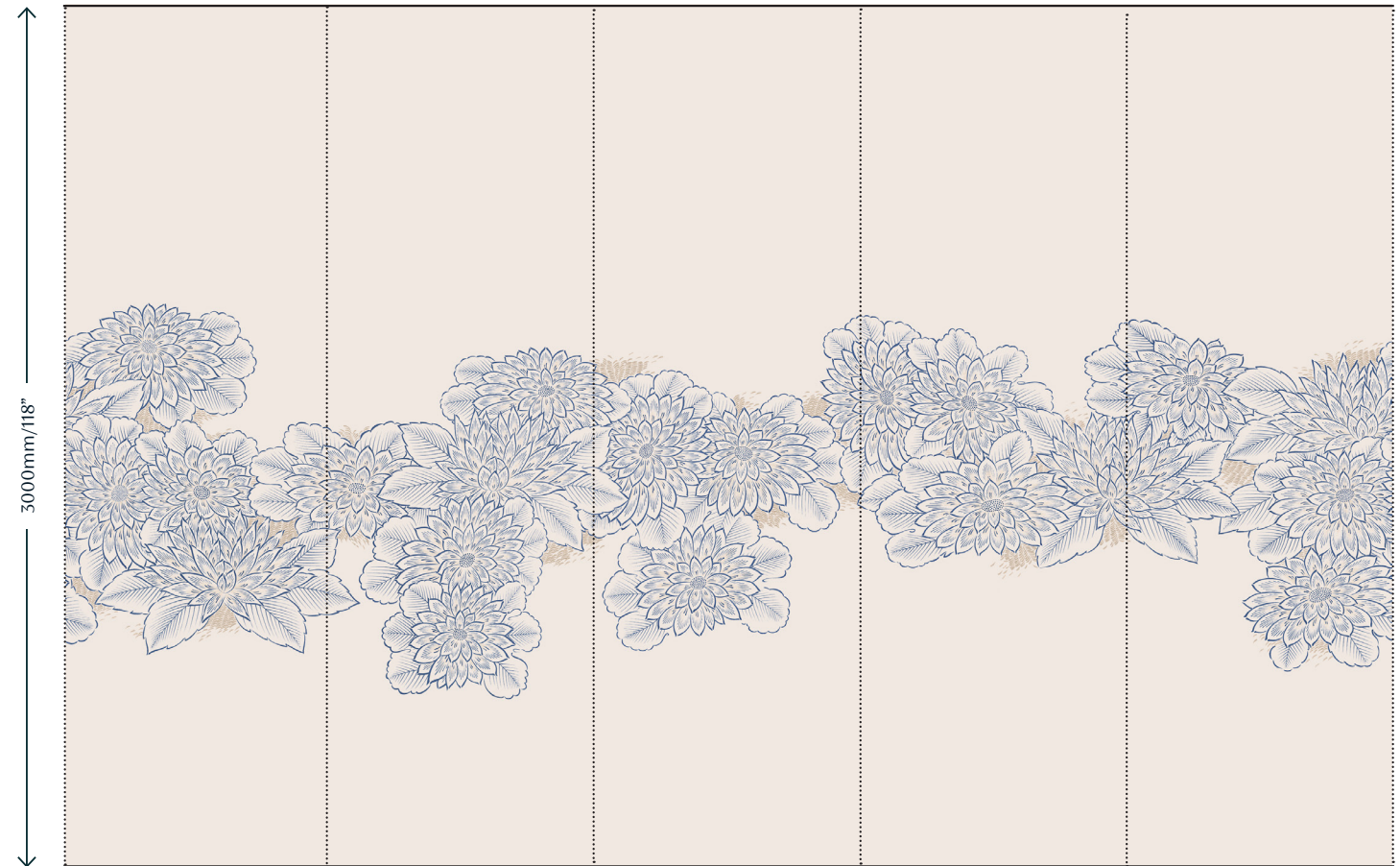
Panel Width - 915mm/36" plus 15mm/ 1/2" trim
Design can be tailored to client elevations.

A005P- Back-printed and hand-finished onto Rayonne

Panel Width - 1100mm/43" plus 15mm/ 1/2" trim
Height - Standard panel height is up to 3m/118".
Design supplied as straight run as standard.

Tailoring is available upon request, please speak with our sales team for more information

A005 Panel Plan



A005 - HOW TO ORDER

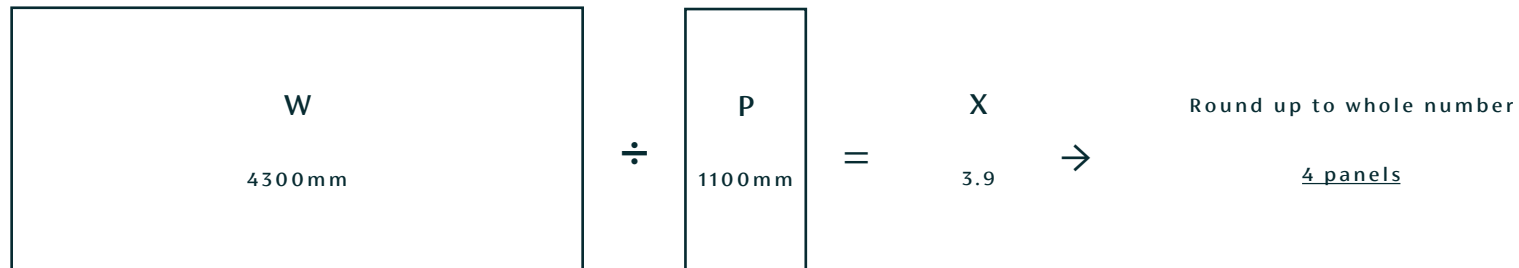
SELECT YOUR COLOURWAY



MEASURE YOUR SPACE

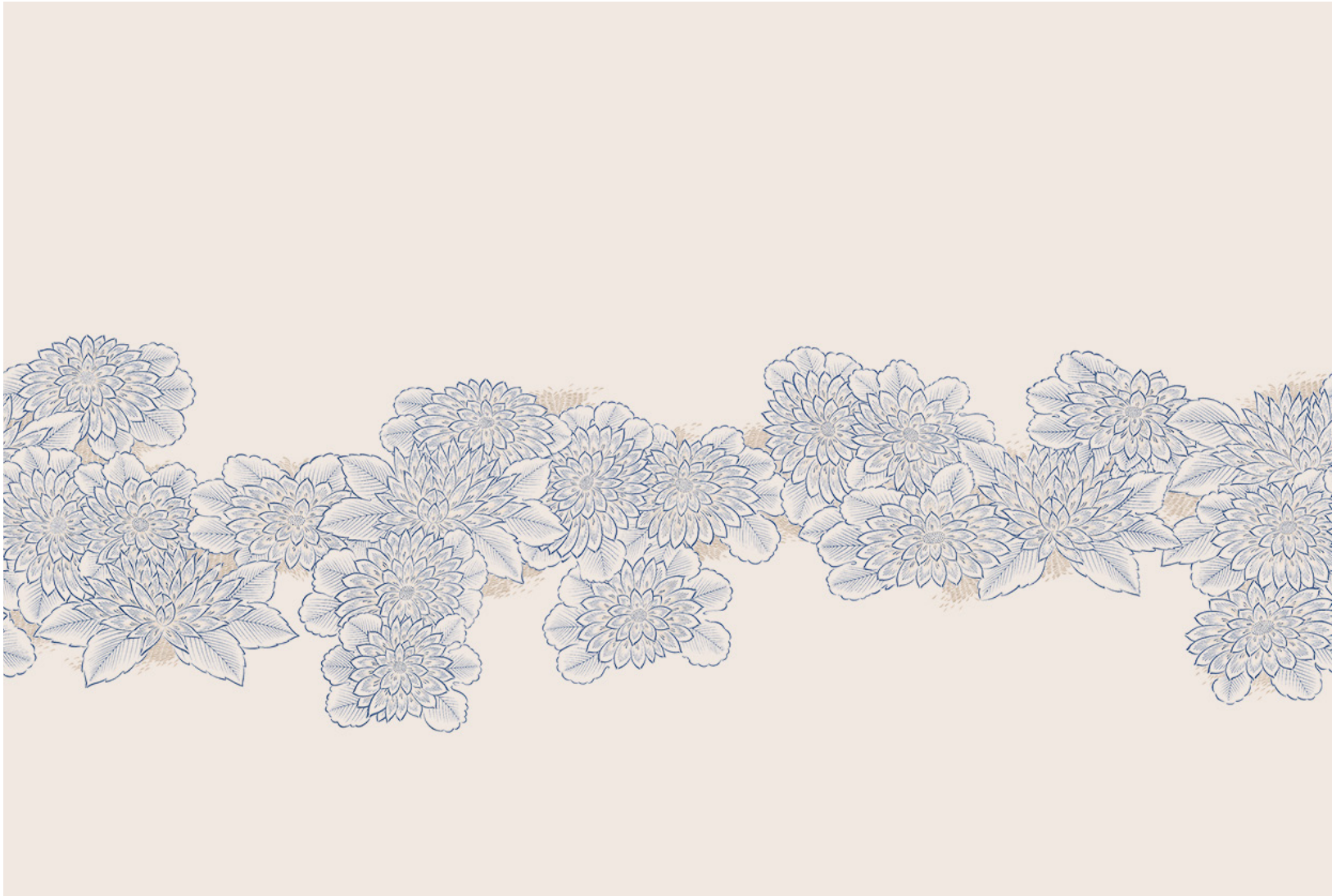
Measure your wall width or room perimeter (W)
Divide this number by the panel width of your selected design (P)
This is the number of panels you need to order (X)

Example:



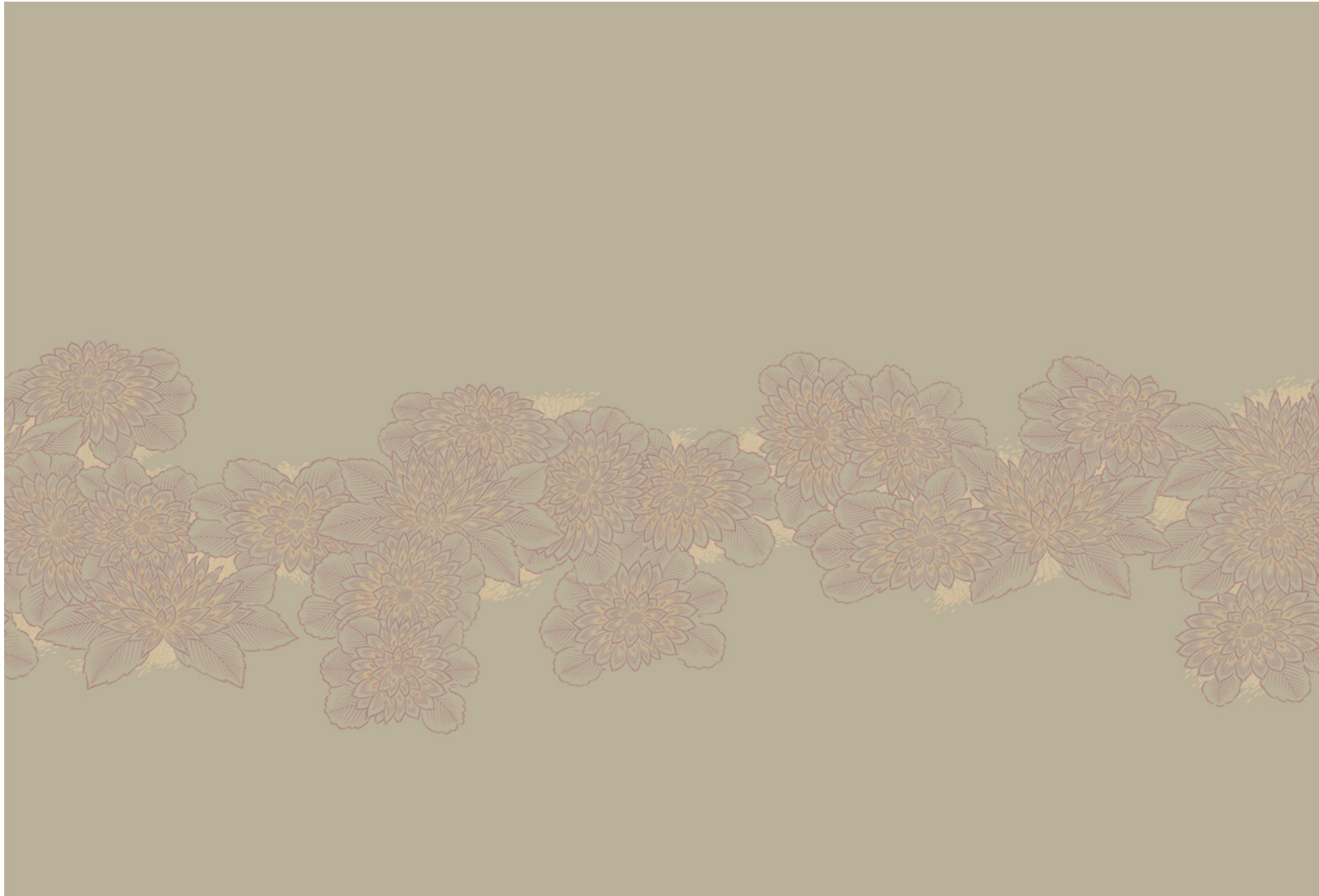
PLACE YOUR ORDER

FROM MENTAL



01 Lola

FROM MENTAL



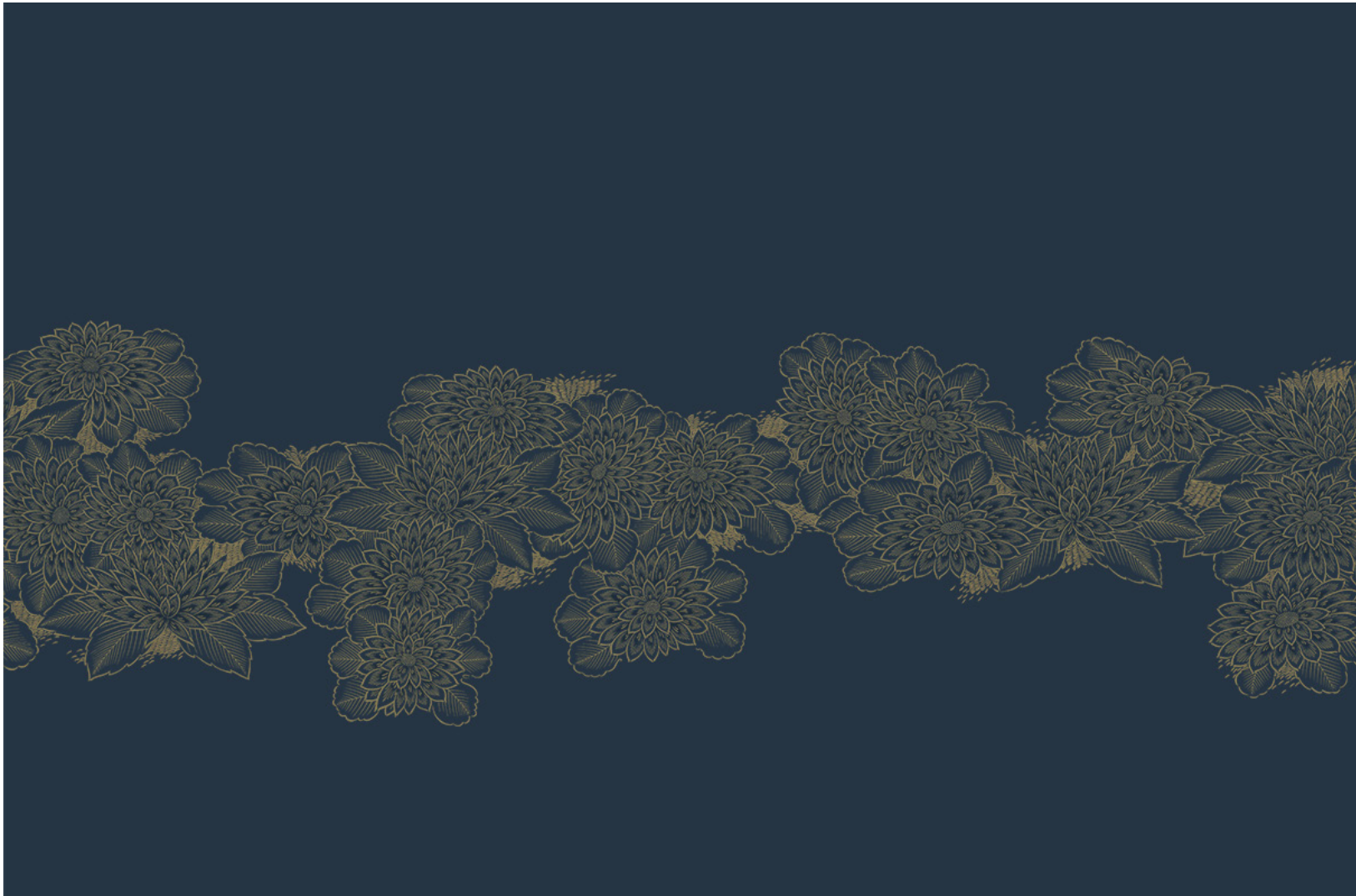
02 Mansetta Sunset

FROM MENTAL



03 Honeyglow

FROMENTAL



04 Chiffon