

FROMENTAL

Deco Arches  
Ratio





A powerful architectural design inspired by the inlay-leather bookbinding of George Cretté in the 1930s. The arresting pattern recalls the modernist style, fine craftsmanship and use of rich materials of the era.

FRONT COVER IMAGE Deco Arches in Delano Pink  
RIGHT-HAND IMAGE Deco Arches in Delano Pink  
Credit: Styled by Alyce Taylor | Photo Credit: Chris Everard





As a simple, large-scale repeat, the bold pattern will fill a quiet room or support a heavily decorative scheme.



IMAGE Close-up of Deco Arches in Delano Pink

# Deco Arches A020

Fromental wallcoverings are hand-made to order, tailored for each room. From supplied elevations and floor plan, we will place the design and panel seaming to ensure optimal installation.

## Technical Information

### Material and Technique

Our Deco Arches design is available fully hand-painted onto silk or printed and hand-finished onto Rayonne background

### Dimensions

#### Silk Background

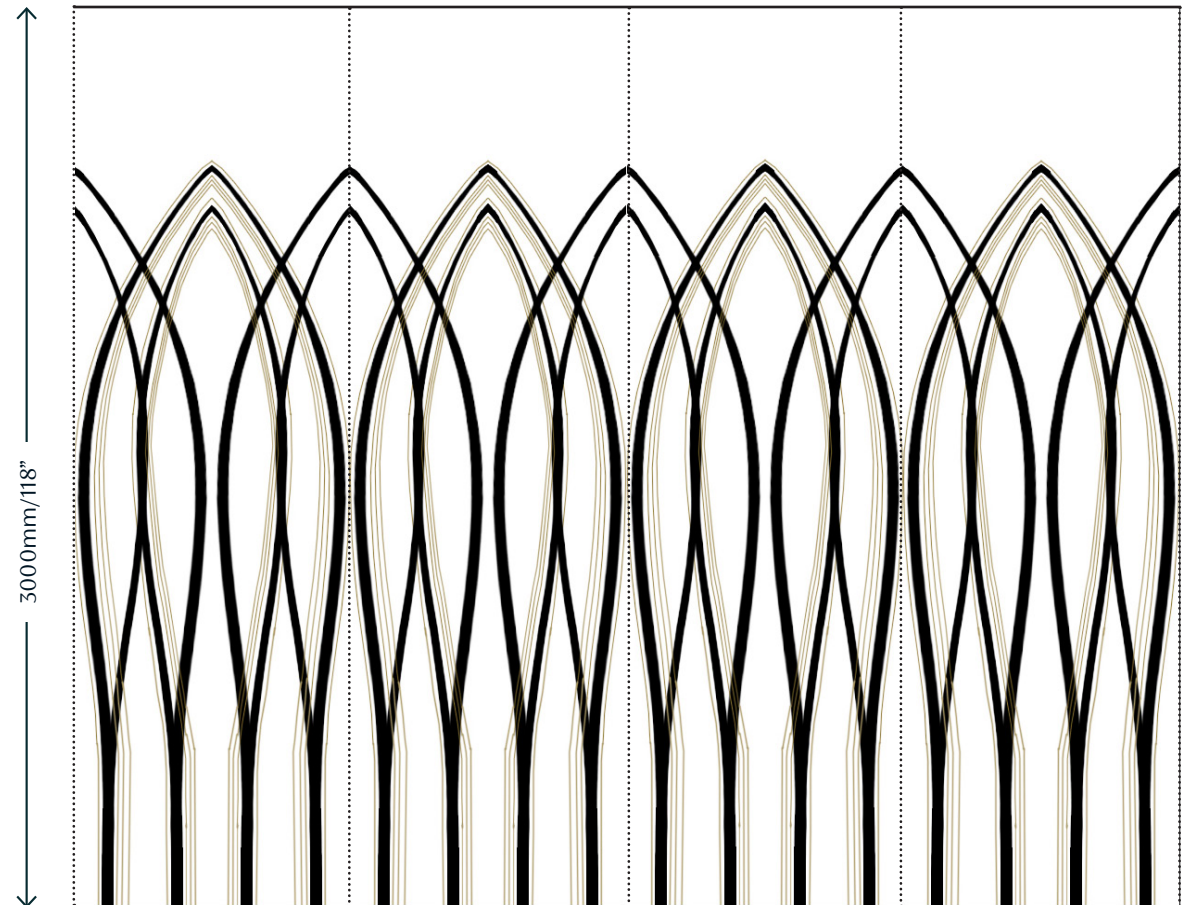
Panel Width - 915mm/36" plus 15mm/ 1/2" trim.

#### Rayonne Background

Panel Width - 1100mm/43" plus 15mm/ 1/2" trim.

Panels can be purchased as a straight run or tailored to fit. Standard panel height is 3m. Tailored panels are supplied 300mm/12" higher than specified wall height.

A020 Panel Plan



# A020 - HOW TO ORDER

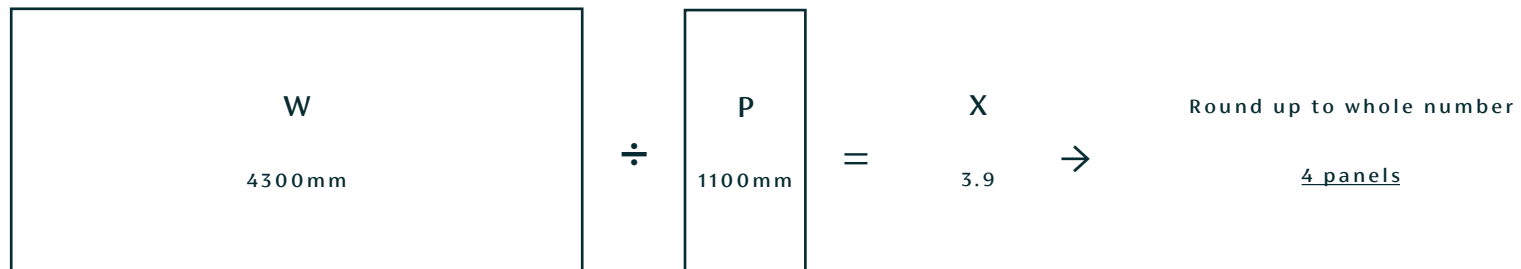
## SELECT YOUR COLOURWAY



## MEASURE YOUR SPACE

Measure your wall width or room perimeter (W)  
Divide this number by the panel width of your selected design (P)  
This is the number of panels you need to order (X)

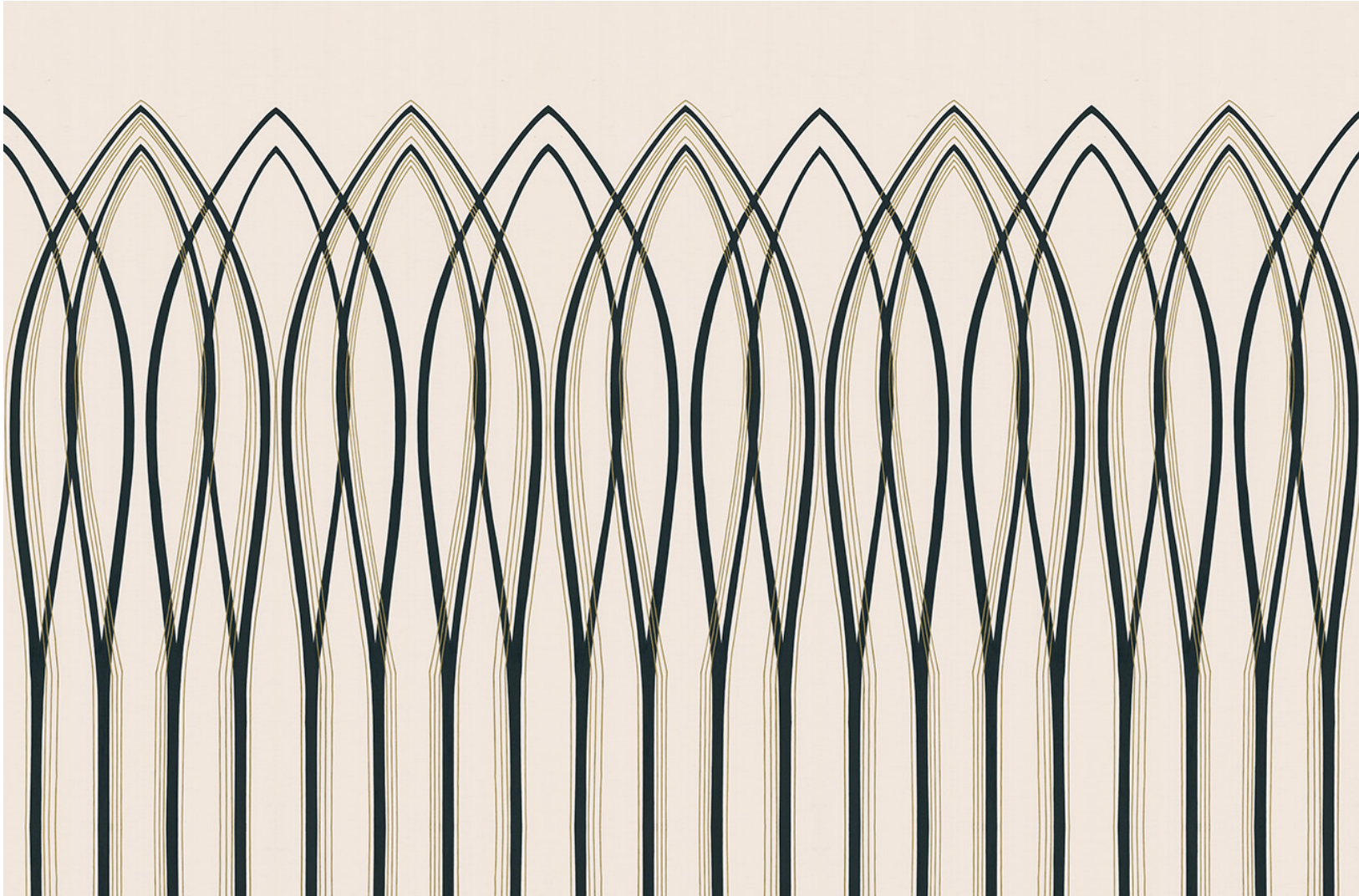
Example:



## PLACE YOUR ORDER

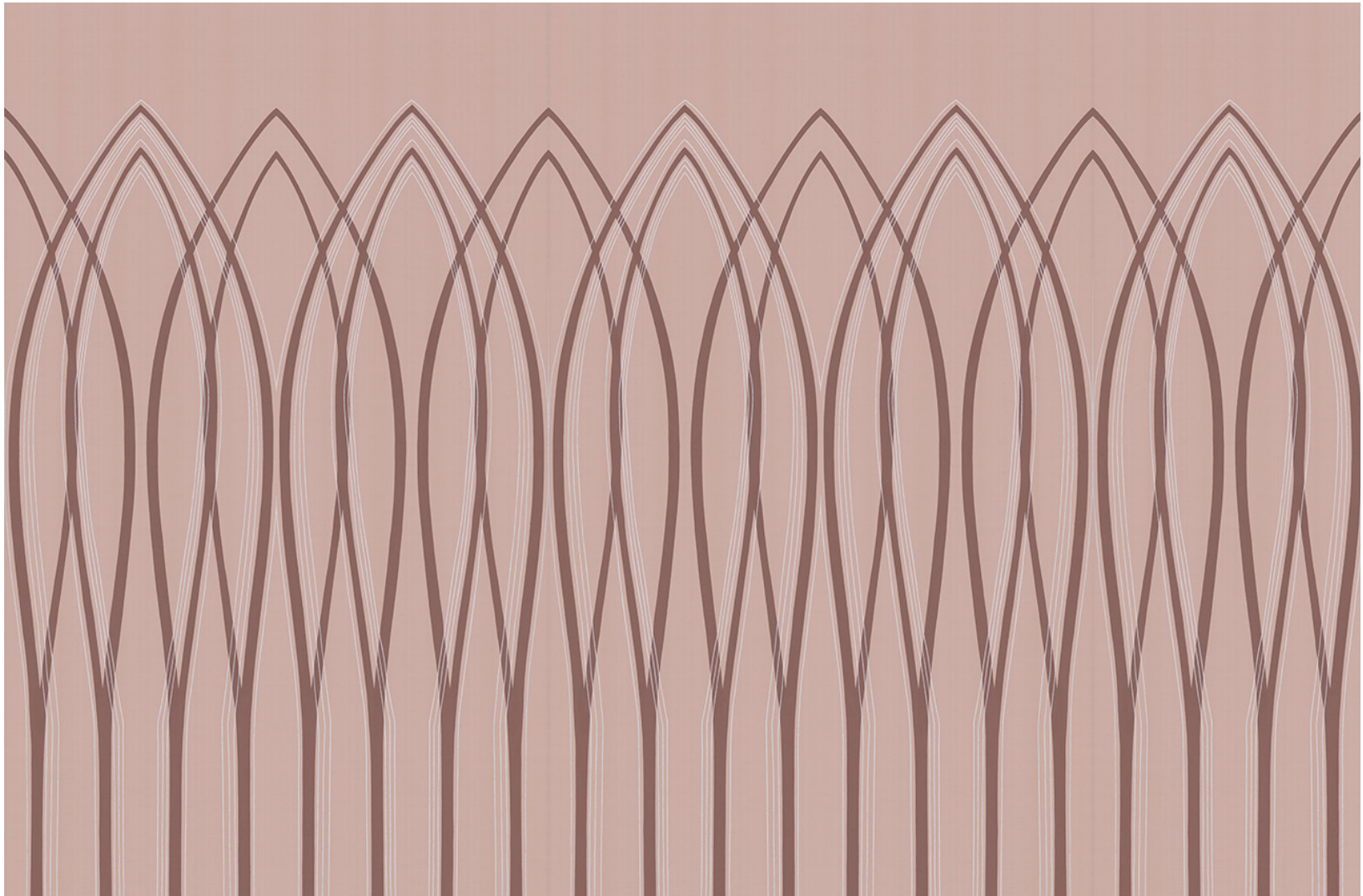


# FROMENTAL



01 Rockefeller Black

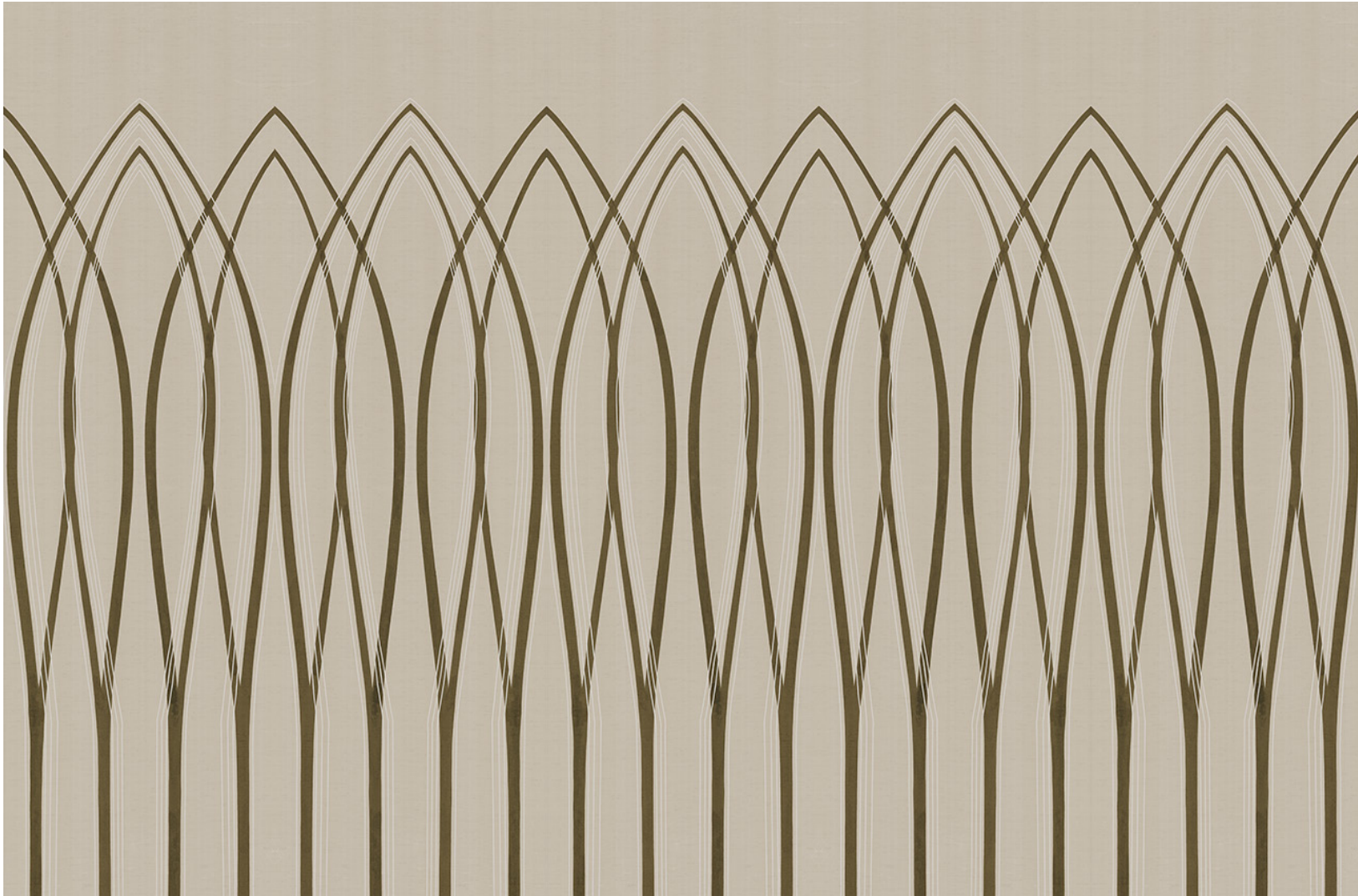
# FROMENTAL



02 Delano Pink



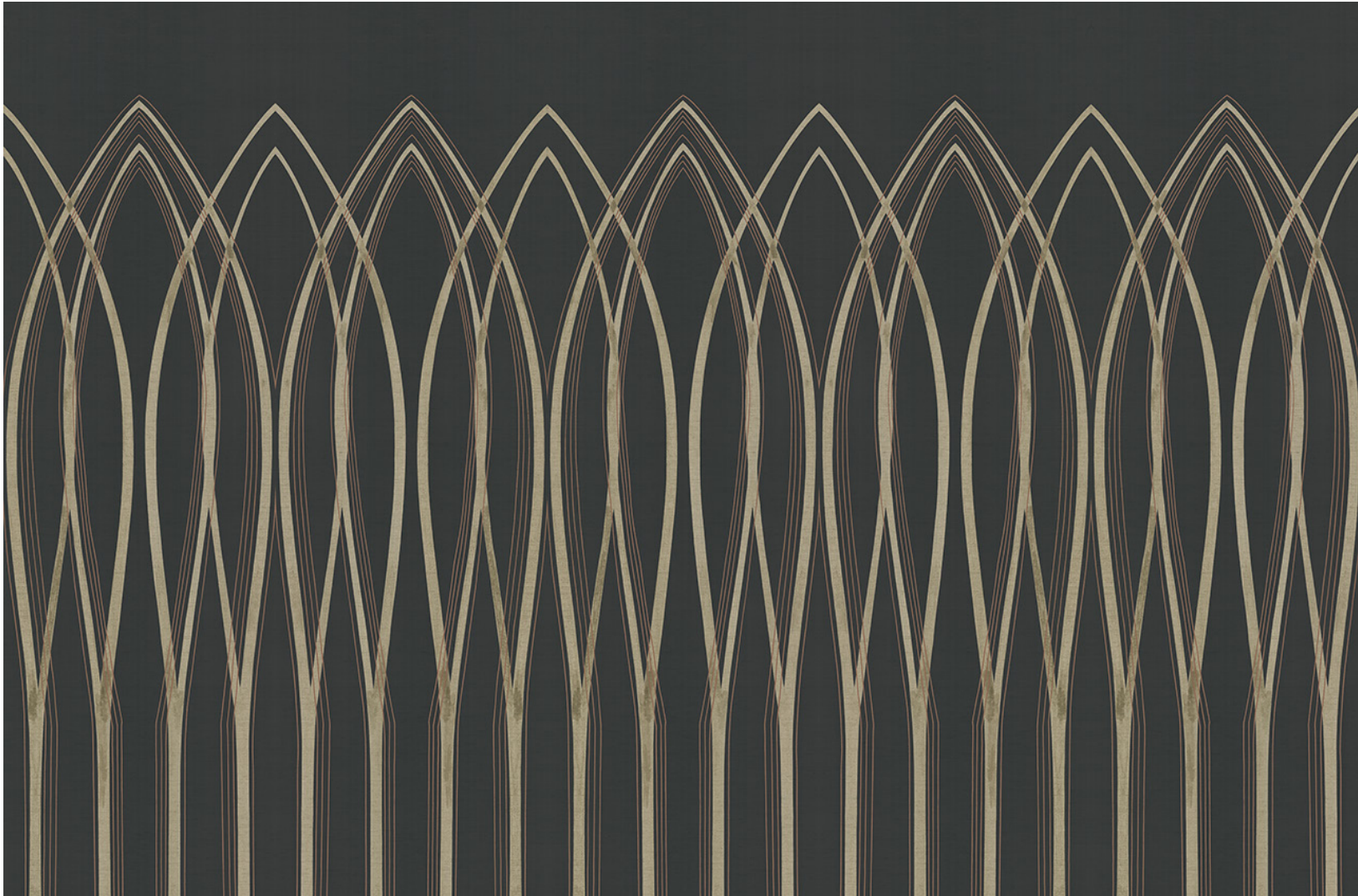
# FROMENTAL



03 Basilica Tan



# FROMENTAL



04 Chrysler Gray

# FROMENTAL



05 Empire White