

FROMENTAL

Lava
Roomskins



Inspired by the Lava glaze of mid-century German ceramics, a blend of pigments and metallic washes are brought together to create this soft and abstract design.

FRONT COVER IMAGE Lava in Marei
Credit: Alan Tanksley
RIGHT-HAND IMAGE Lava in Otto



The negative space of this design is key to the success of its composition; the interplay of raw silk and expressive brushwork.



Lava D019H

Fromental wallcoverings are hand-made to order. From supplied elevations and floor plan, we will provide a panel plan for your space to ensure optimal installation.

Technical Information

Installation

This design is hand-painted onto individual silk panels, therefore the design will not join across panel seams. However, joins are usually well hidden within the complex pattern of the design, this is illustrated in the visual on the right. Please note this design can be installed horizontally or vertically.

Material and Technique

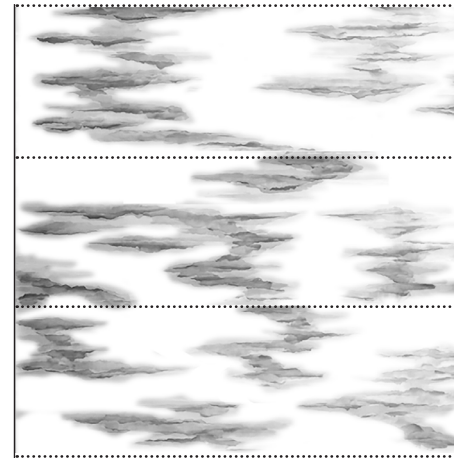
Hand-painted on paper-backed silk.

Dimensions

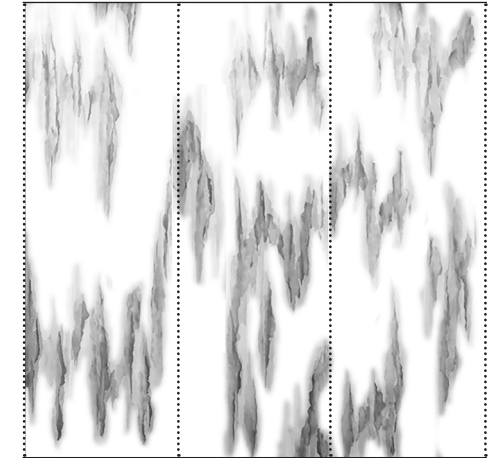
Height - Panels are supplied 300mm/12" higher than specified wall height. Standard panel height is up to 4300mm/14ft. Panels over the standard height are available with a surcharge.

Width - Standard panel width 915mm/36" plus 15mm/1/2" trim.

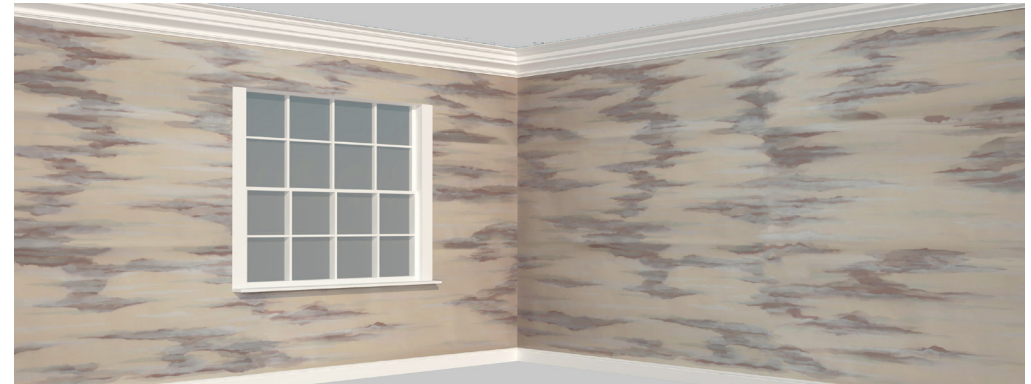
Hung Horizontally



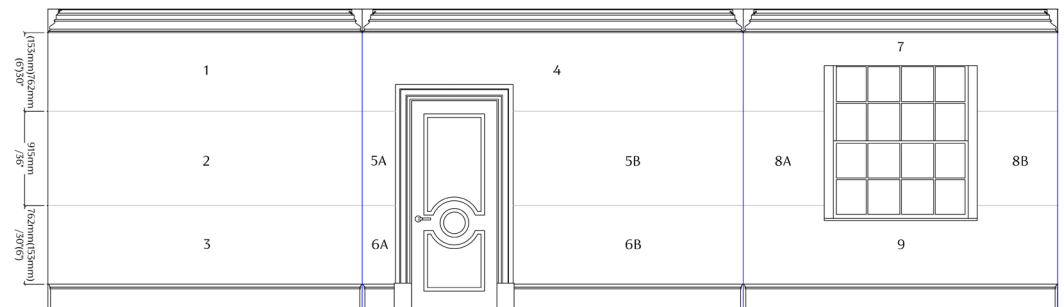
Hung Vertically



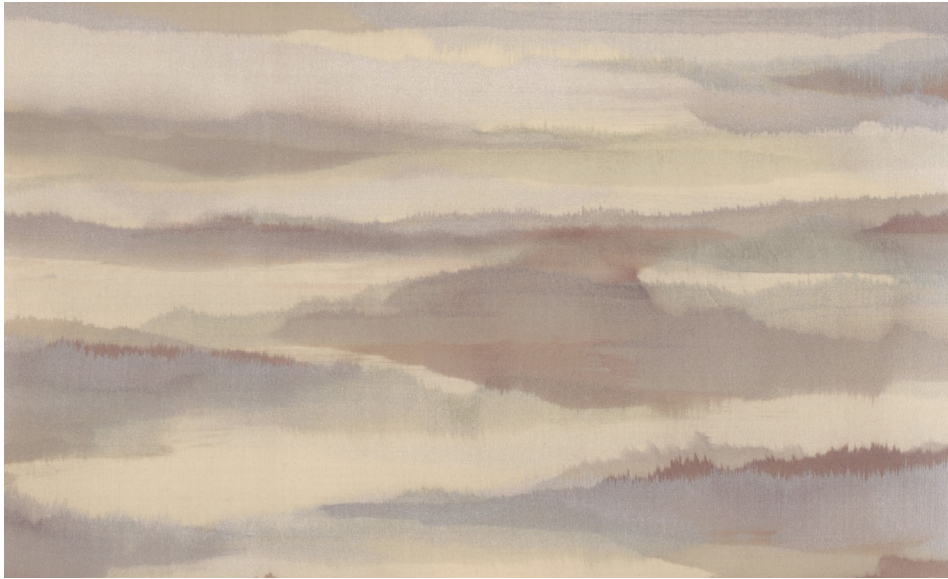
Example Corner Join (Hung Horizontally)



Example Panel Plan (Hung Horizontally)



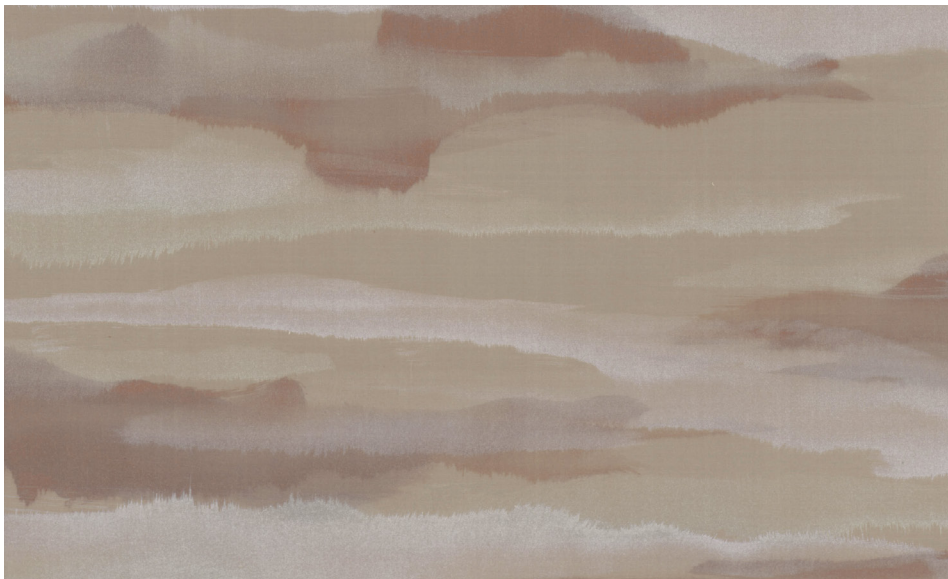
Colourways



01 **Otto** on Putty Silk



02 **Ilkra** on Flint Silk



03 **Roth** on Steel Silk



04 **Marei** on White Silk

FROMENTAL



Lava in Marei