

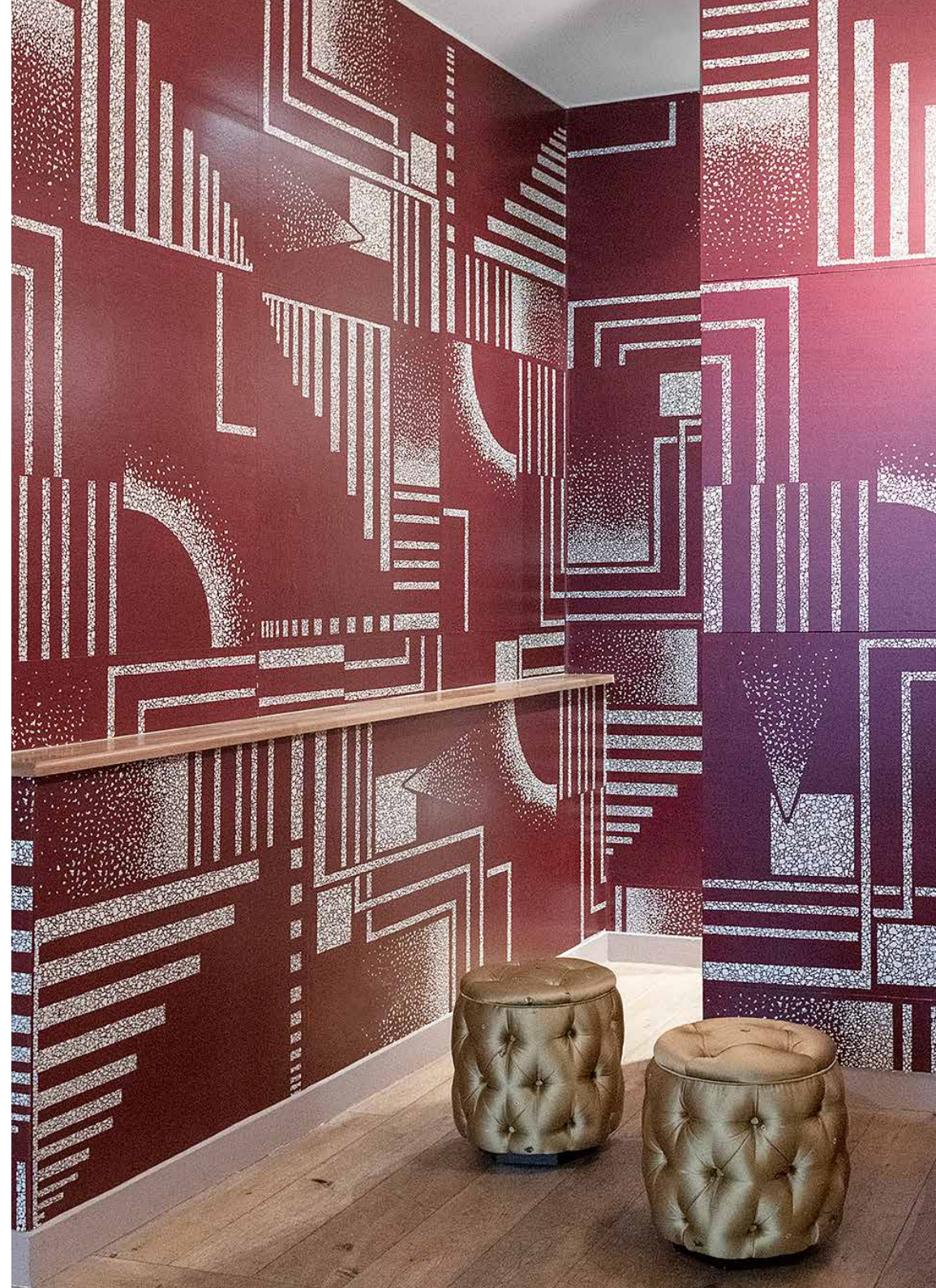
FROMENTAL

Metropolis
Ratio



Metropolis is a conceptual design, inspired by the Art Deco period and eggshell inlay work of Jean Dunand and Gaston Suisse. A series of tiled abstract patterns rendered on a waxed ground, with the warmth and richness of burnished leather.

FRONT COVER IMAGE Metropolis in Pierre
Credit: Sarah Hogan
RIGHT-HAND IMAGE Metropolis in Fritz
Credit: Stephane Kossmann



The grid-like structure of the tiles, juxtaposed with the intricate craquelure of the eggshell pattern, creates a versatile design that is both bold and refined.



Metropolis EL02

Fromental wallcoverings are hand-made to order. Each panel is exclusively created to fit clients' specifications. From supplied elevations and floor plan we will calculate the amount of wallcovering required to ensure optimal installation.

Technical Information

Material and Technique

Hand-printed on waxed paper*

*Hand-dyed and finished with wax.

How to Order

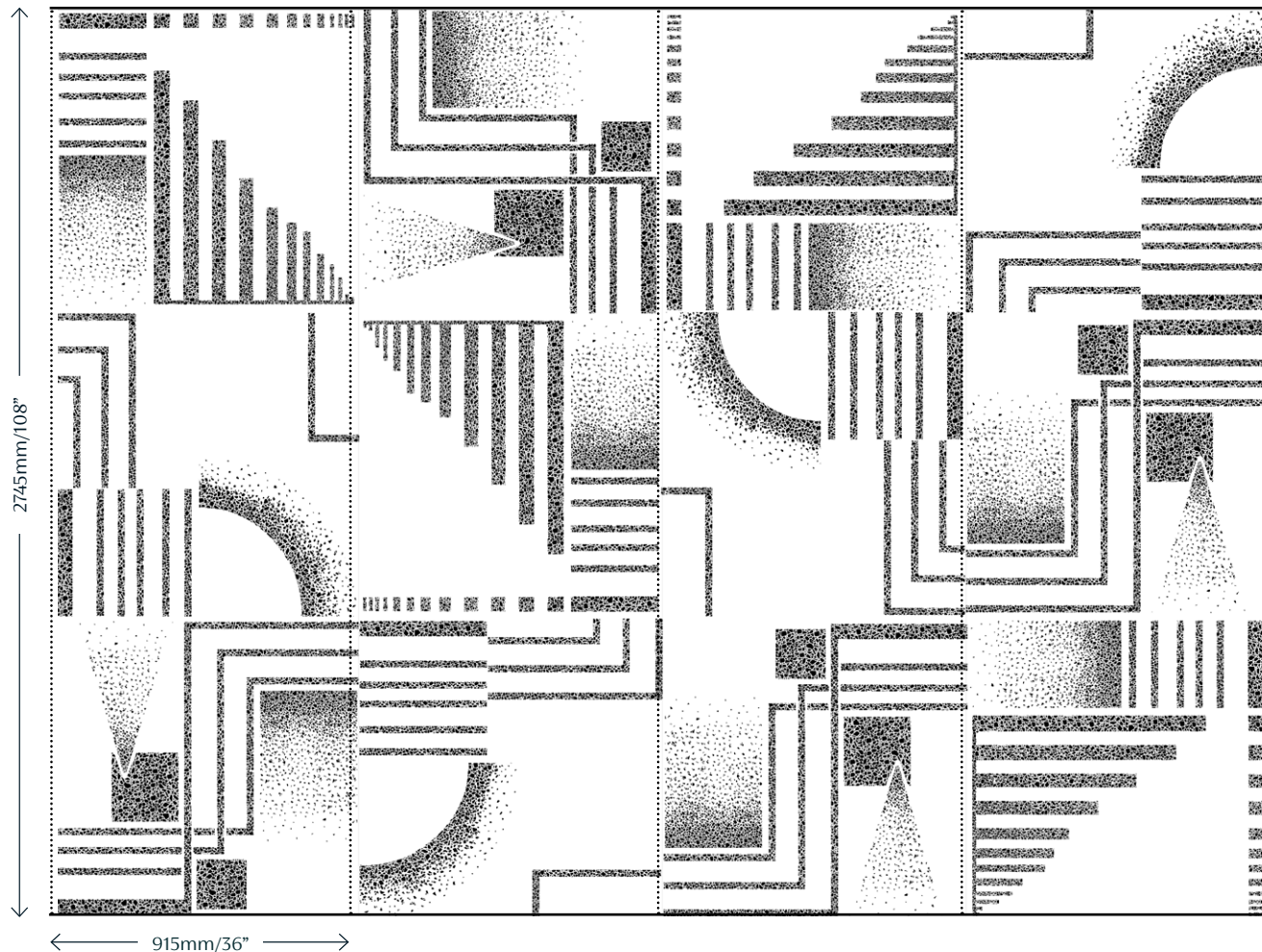
Metropolis is made up of a series of square tiles (915mm / 36" square) which are mounted together to create panels. The standard panel height is 2745 / 108" containing 3 tiles.

Taller panels can be created by adding further tiles to the panel height.

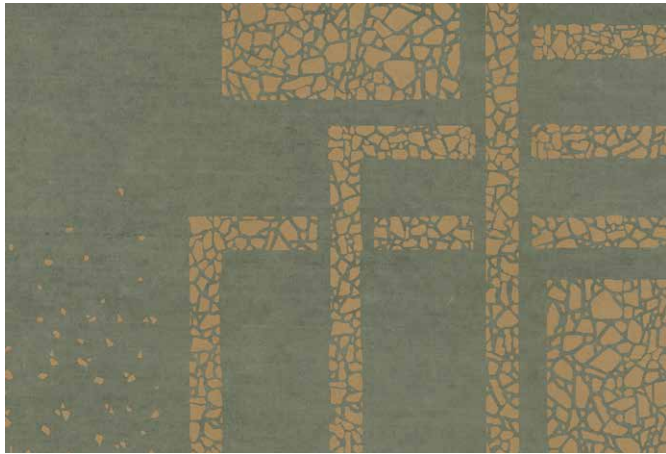
Customisation

Metropolis consists of 3 different decorated tiles; the order and direction of the tiles can be customised.

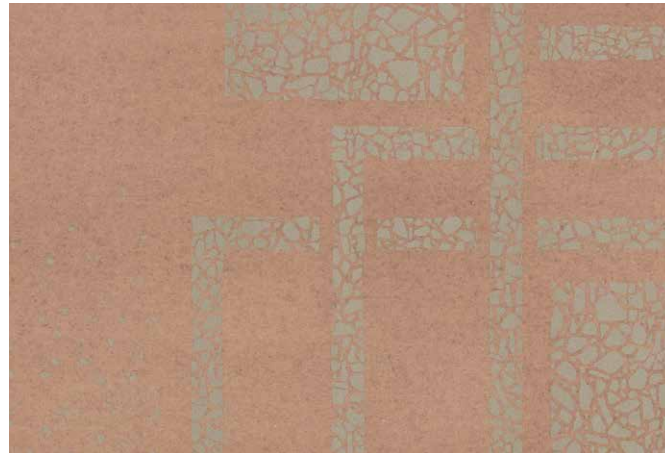
Please speak with one of our sales team if you wish to discuss this further.



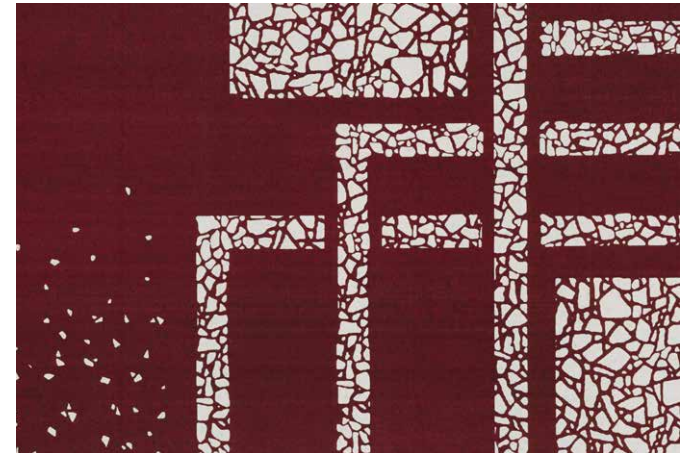
Colourways



01 **Gaston** on Plummage Cartonnage



02 **Dominique** on Rose Cartonnage



03 **Fritz** on Ruby Cartonnage



04 **Harbou** on Coast Cartonnage



05 **Pierre** on Graphite Cartonnage

FROM MENTAL



Metropolis in Gaston