

A close-up photograph of a dark brown velvet fabric. The fabric is draped and folded, creating deep shadows and bright highlights that emphasize its plush texture. Several thin, gold-colored threads are visible, likely part of the fabric's construction or decorative stitching, running diagonally across the frame. The overall lighting is dramatic, highlighting the fine pile of the velvet.

FROMENTAL

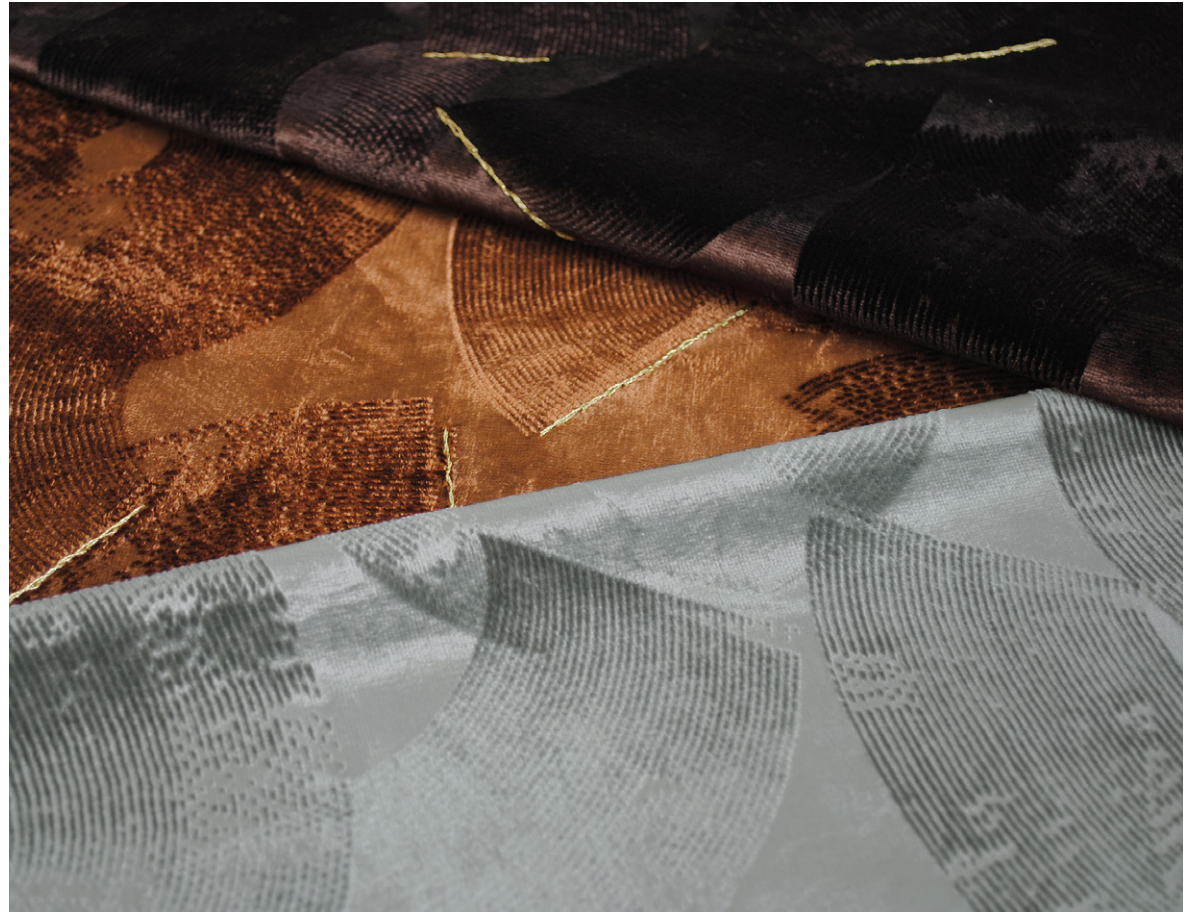
Equus
Velvet

Equus' sumptuous velvet and gestural brush marks bring to mind the just-groomed hide of a handsome, thoroughbred horse.

FRONT COVER IMAGE Bay
RIGHT-HAND IMAGE Bay | Credit: Photography by Valerio Galeri, Styled by Marta Sala Interiors



Using a unique embossing method, our artisans skilfully mark the surface of the velvet with a flat, metal horse-grooming comb before applying a small amount of stitching in metallic thread, echoing the intricate plait of a horse's mane.



Colourways



01 Bay
Our dark brown Italian Velvet captures the light to reveal an array of rich tones and features gold embroidery.



02 Gray
Our hand-tooled Grey Italian velvet suggests a gamut of grey hues and features embroidery in silver



03 Chestnut
Made using our Italian velvet in copper, Chestnut's bruised surface texture creates shades ranging from cocoa to sand and features embroidery in gold.



04 Cremello
White Italian velvet is artfully manipulated to reveal whites, silvers and greys. It features silver embroidery.

FROMENTAL

