

FROMENTAL

Ammaliaire  
Collaboration Collection





A collaboration with celebrated American designer Jessica Jubelirer, Ammaliare takes its inspiration from the elegantly whimsical work of 20th-century French artist Christian Bérard.



Abstract flowers, handpainted in the Expressionist style, dance across our slubbed Raw Silk, evoking a sense of movement and sophistication. An earthy mid-century Italian palette incorporating terracotta and olive lends warmth to any space, while hand-embroidered details in raffia and cotton bring a tactile richness, a perennial theme in our work.



# Ammaliare JJ001

Fromental wallcoverings are hand-made to order, tailored for each room. From supplied elevations and floor plan, we will place the design and panel seaming to ensure optimal installation.

## Technical Information

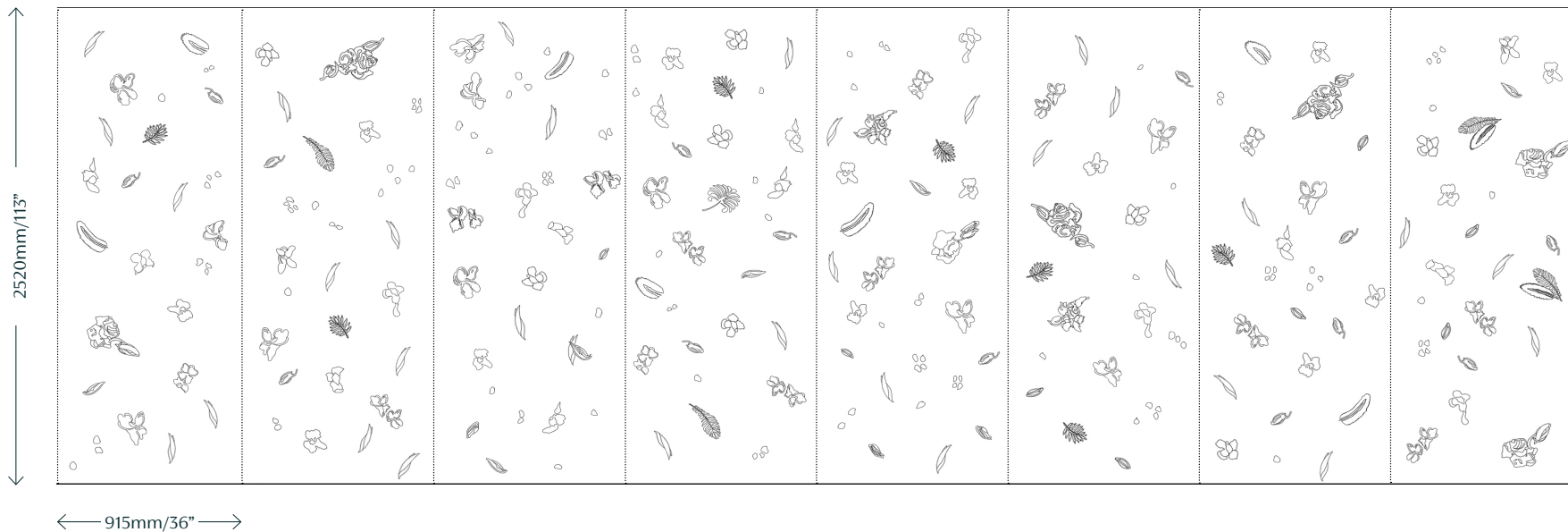
### Material and Technique

Hand-Painted and Hand-Embroidered on Raw Silk

### Dimensions

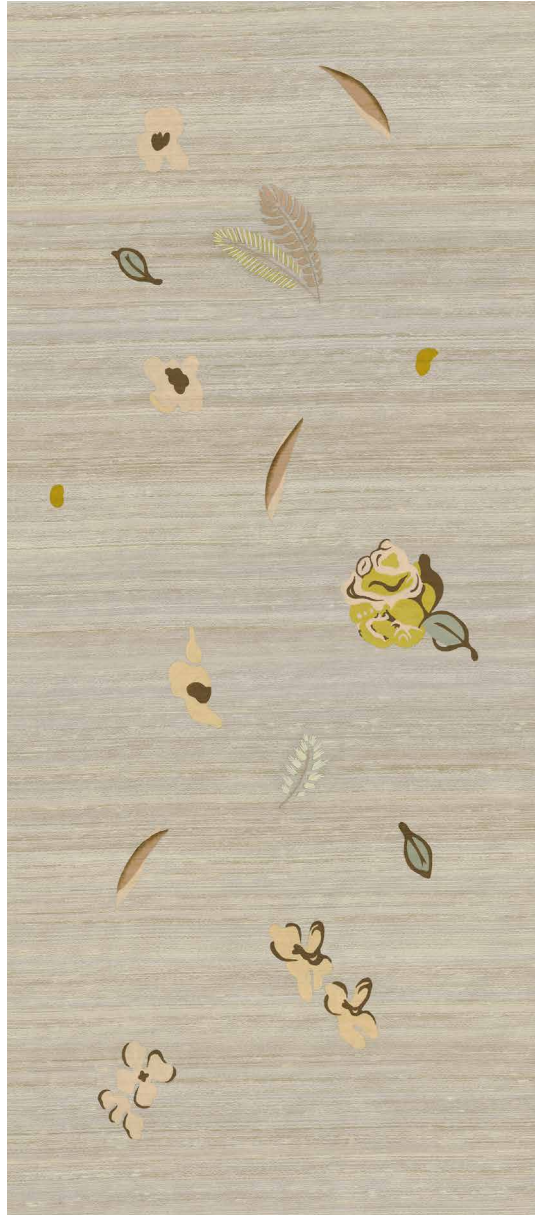
**Height** - Panels are supplied 150mm/6" higher than specified wall height. Standard panel height is up to 4300mm/14ft. Taller panels are available with a surcharge.

**Width** - Standard panel width 915mm/36" plus trim.

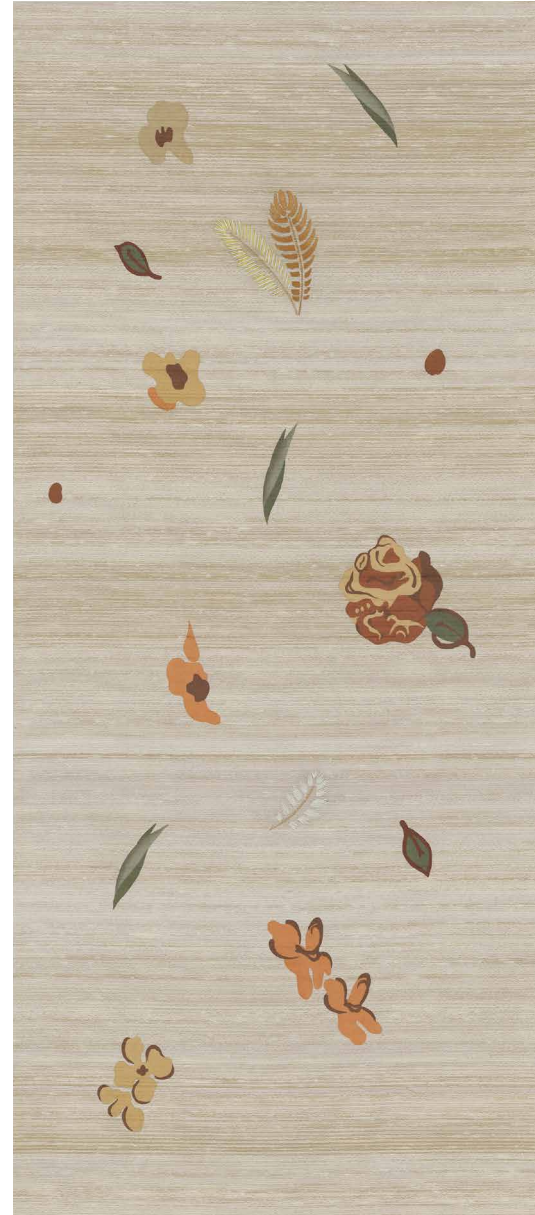




# Colourways



**01 Amber** Hand-Painted and Hand-Embroidered on Raw Silk  
Painted details in earthy, southern Italian tones of terracotta, olive and straw move across a background of slubbed Raw Silk in Ecu.



**02 Terracotta** Hand-Painted and Hand-Embroidered on Raw Silk  
Light, fresh and airy, our Amber colourway features details in straw, olive and dusty pink on an open-textured background of our Ecu Raw Silk.

# FROM MENTAL



IMAGE Close-up of Ammalire in Terracotta