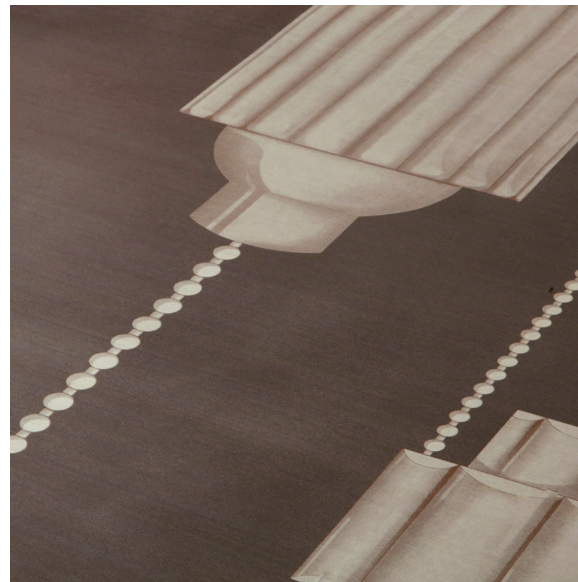


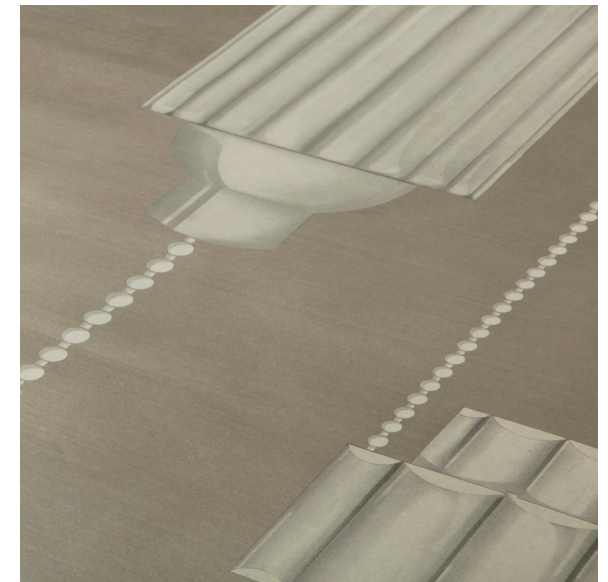
ref. MB06-01n

col. stardust



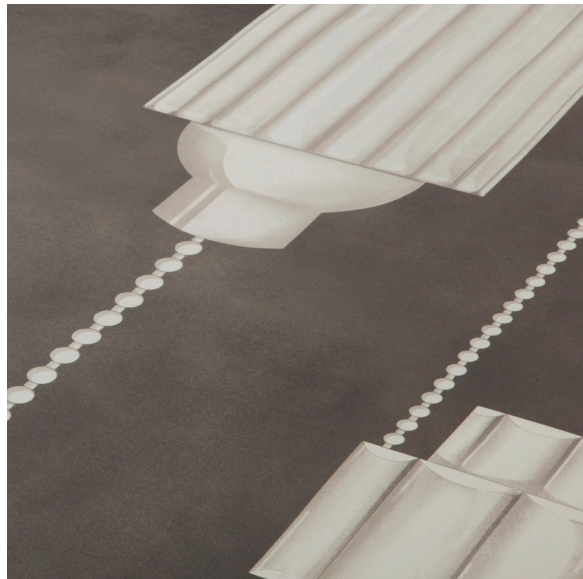
ref. MB06-02n

col. topaz



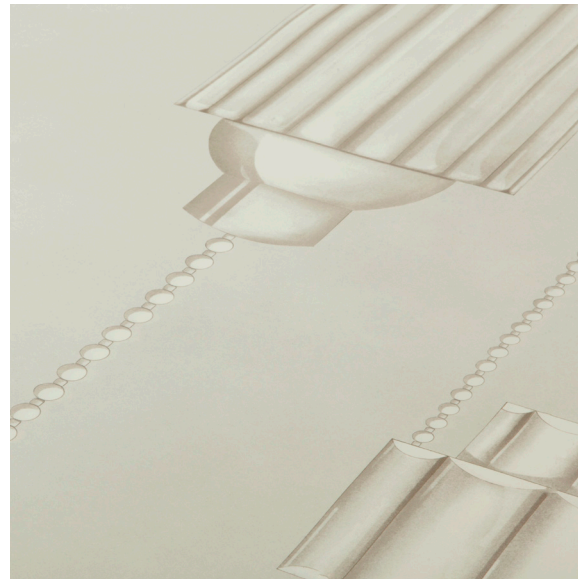
ref. MB06-03n

col. tonic



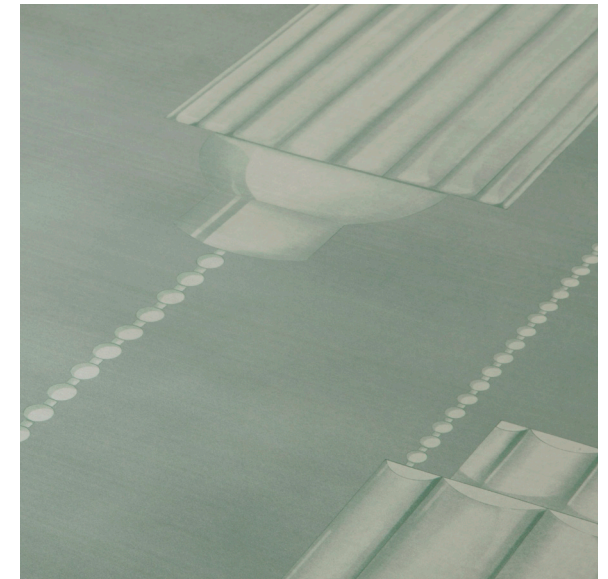
ref. MB06-04c

col. mercury



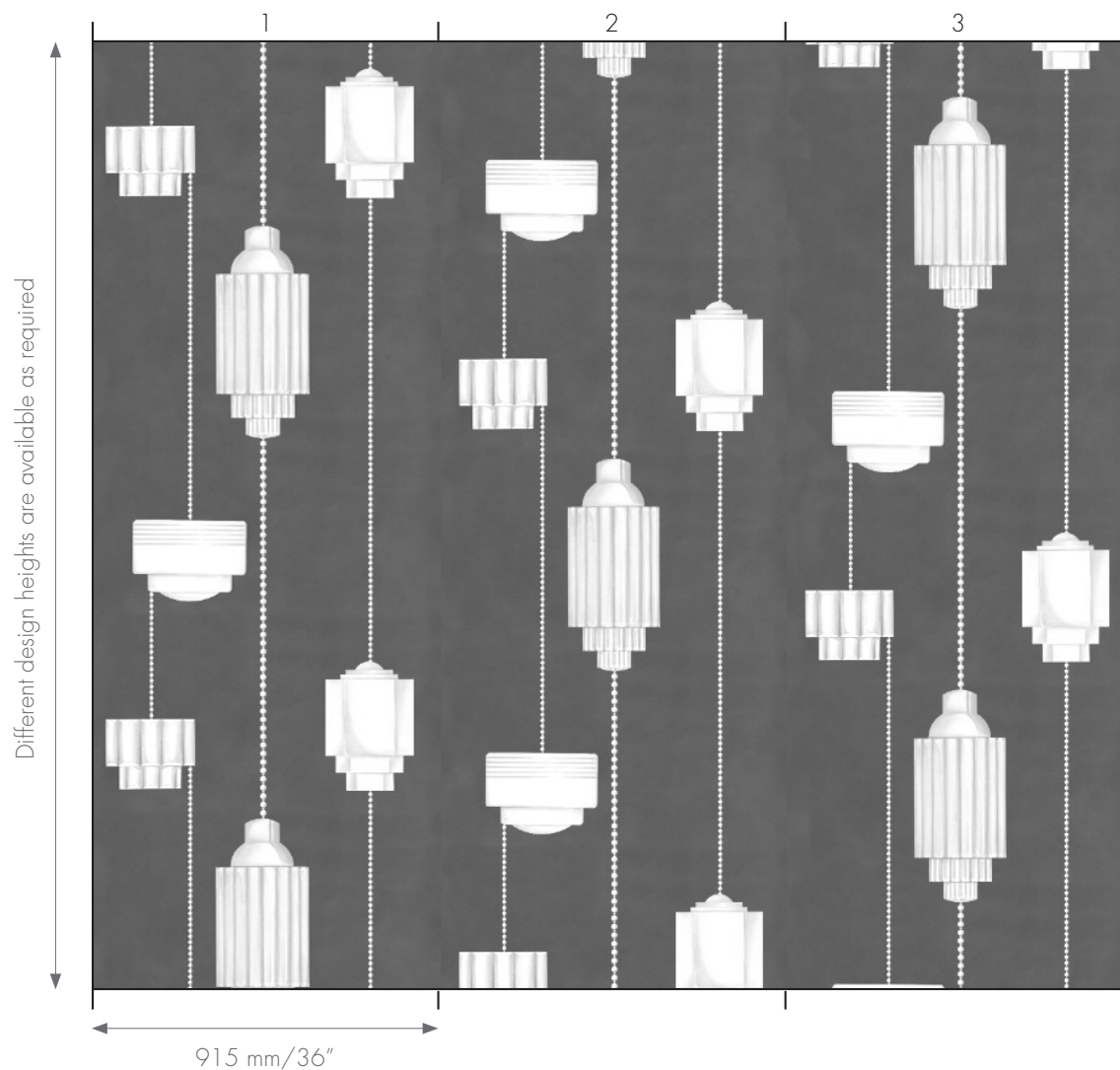
ref. MB06-05c

col. fawn



ref. MB06-06n

col. ocean



This overscaled wall covering pattern recalls the 1920s Jazz Age and the luxury and glamour of art deco movie houses, theaters and cruise ships. Strands of beaded chains and glass lanterns hang in midair on hand painted metallic backgrounds.

Application: powder rooms, dining room walls, hallways and corridors, featured walls and bedroom walls.

Ground Options:

Nacre: Paper substrate with hand-brushed metallic glaze striation.

Cartridge Paper: Matte white archival paper with subtle texture.

## Ground Options

**Nacre:** paper substrate with hand-brushed metallic glaze striation.

Substrate width: 1050mm (42")

Usable width: 915mm (36")

**Faux Linen:** Matte embossed vinyl canvas with linen texture (commercial/hospitality grade).

Substrate width: 1300 mm (51")

Usable width: 1200mm (47")

**Cartridge Paper:** Matte white archival paper with subtle texture.

Substrate width: 1050mm (42")

Usable width: 915mm (36")

## Ordering Guide

Supplied as panels on a roll. Client must specify panel height and number of panels required.

### Customising color

The background color of an existing colorway can be changed. There will be fee for this, which will include sampling.

To create an entirely new custom color, there will be a flat fee charge, which will include sampling.

*For all pricing, please contact our Sales team.*

### Lead-times

**Custom Color Sample:** 1-2 weeks

**General Production:** All orders are made on request, we do not store any items. Approx lead time 5-6 weeks

*Note: All times noted above are from receipt of deposit payment and are subject to change, depending on order quantity and production schedule.*