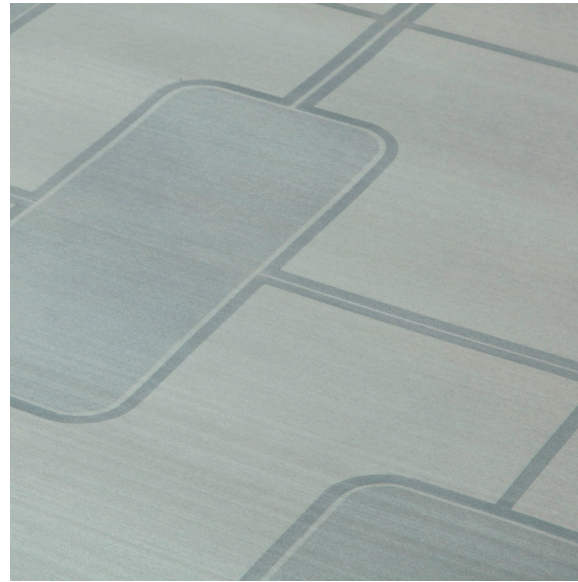


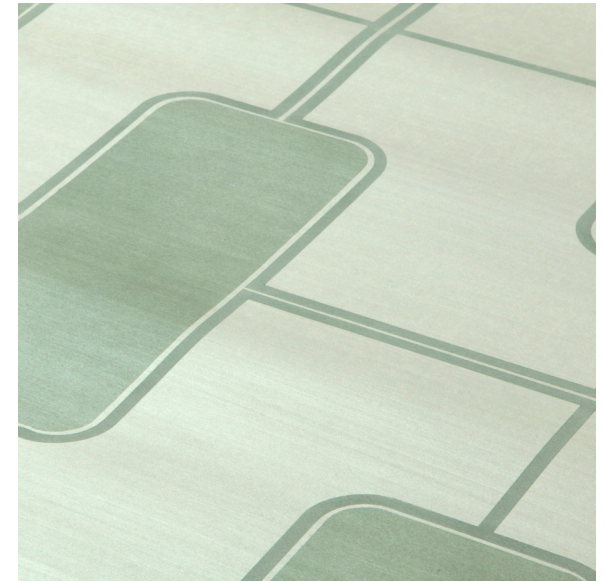
ref. MB03-01n

col. dusk



ref. MB03-02n

col. equinox



ref. MB03-03n

col. seaglass



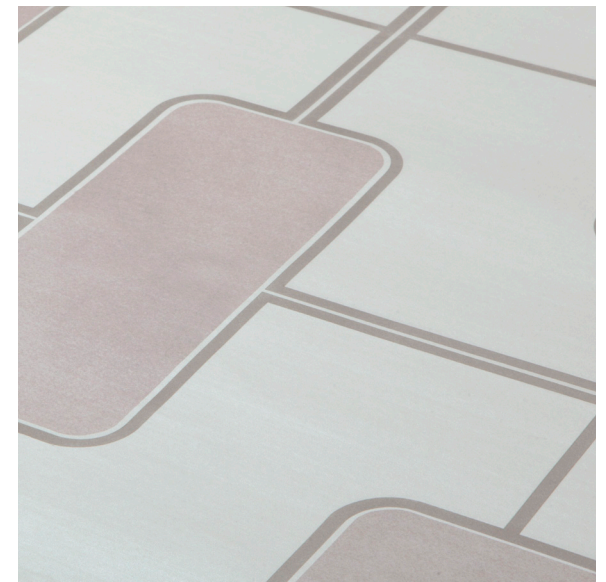
ref. MB03-04n

col. magic mirror



ref. MB03-05m

col. dawn



ref. MB03-06m

col. petal



An architectural grid of lines and oversized pleasing capsule shapes create a translucent wall screen or gate feeling.

Application: living rooms, featured fireplace walls, bedroom and bath walls etc.

Ground Options:

Nacre: Paper substrate with hand-brushed metallic glaze striation.

## Ground Options

**Nacre:** paper substrate with hand-brushed metallic glaze striation.

Substrate width: 1050mm (42")

Usable width: 915mm (36")

**Faux Linen:** Matte embossed vinyl canvas with linen texture (commercial/hospitality grade).

Substrate width: 1300 mm (51")

Usable width: 1200mm (47")

**Cartridge Paper:** Matte white archival paper with subtle texture.

Substrate width: 1050mm (42")

Usable width: 915mm (36")

## Ordering Guide

Supplied as panels on a roll. Client must specify panel height and number of panels required.

## Customising color

The background color of an existing colorway can be changed. There will be fee for this, which will include sampling.

To create an entirely new custom color, there will be a flat fee charge, which will include sampling.

*For all pricing, please contact our Sales team.*

## Lead-times

**Custom Color Sample:** 1-2 weeks

**General Production:** All orders are made on request, we do not store any items. Approx lead time 5-6 weeks

*Note: All times noted above are from receipt of deposit payment and are subject to change, depending on order quantity and production schedule.*