



'Les Folies'
The Timothy Corrigan Collection
for
FROMENTAL

Drapery Wave

The 17th Century Gobelins tapestries, based on the paintings of Peter Paul Rubens, which were commissioned by Louis XIV, are the inspiration for this dramatic design. A panoramic that features the ocean, the sky and billowing fabric, Drapery Wave has a surreal quality with its illusion of sunlight on water.

FRONT COVER IMAGE Close-up of Drapery Waves in Royal Gold
RIGHT-HAND IMAGE Drapery Waves in Sert Red





IMAGE Drapery Waves in Sert Red

Drapery Waves T002

Fromental wallcoverings are hand-made to order, tailored for each room. From supplied elevations and floor plan we will place the design and panel seaming to ensure optimal installation.

Technical information

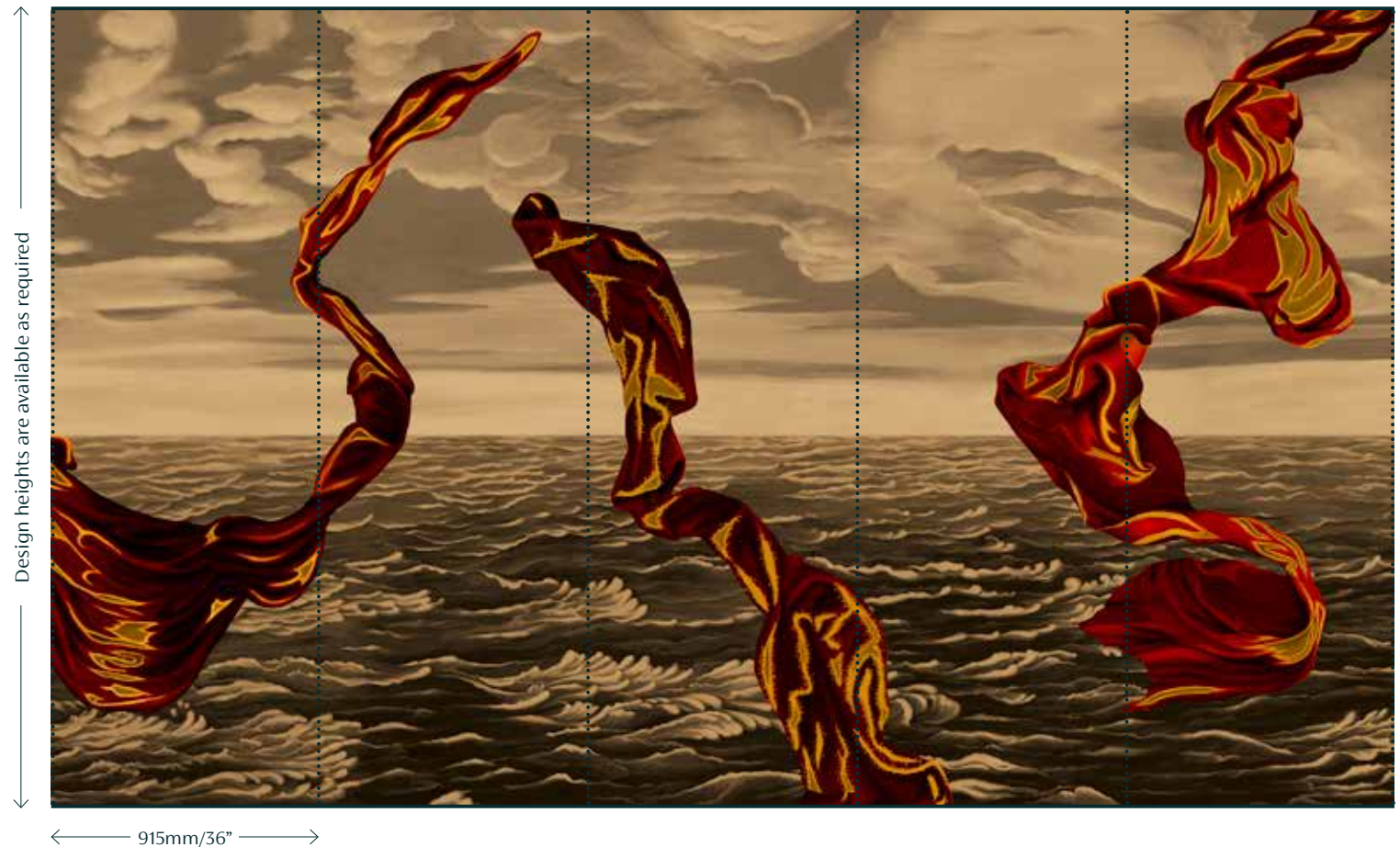
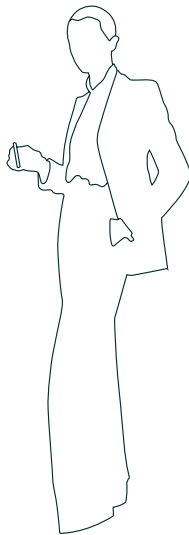
Material and Technique

Printed on hand-brushed linen, hand-gilded linen, hand-gilded paper and dupion silk depending on colourway.

Dimensions

Height - Panels are supplied 150mm/6" higher than specified wall height. Standard panel height is up to 3000mm/10ft. Taller panels are available with a surcharge.

Width - Standard panel width 915mm/36" plus 25mm/1" trim



Colourways



01 Sert Red on Cartridge



02 Royal Gold on Gilded Paper

FROMENTAL



Drapery Waves in Royal Gold