

*'Les Folies'*  
*The Timothy Corrigan Collection*  
*for*  
**FROMENTAL**

**Oceanic**





Oceanic was inspired by a 19th Century Japanese wood block print. The stylised birds and organic swirling waves are enlarged to a super scale graphic and executed on shimmering hand-made grounds.



FRONT COVER IMAGE Oceanic in Indigo Sea  
RIGHT-HAND IMAGE Oceanic in Indigo Sea



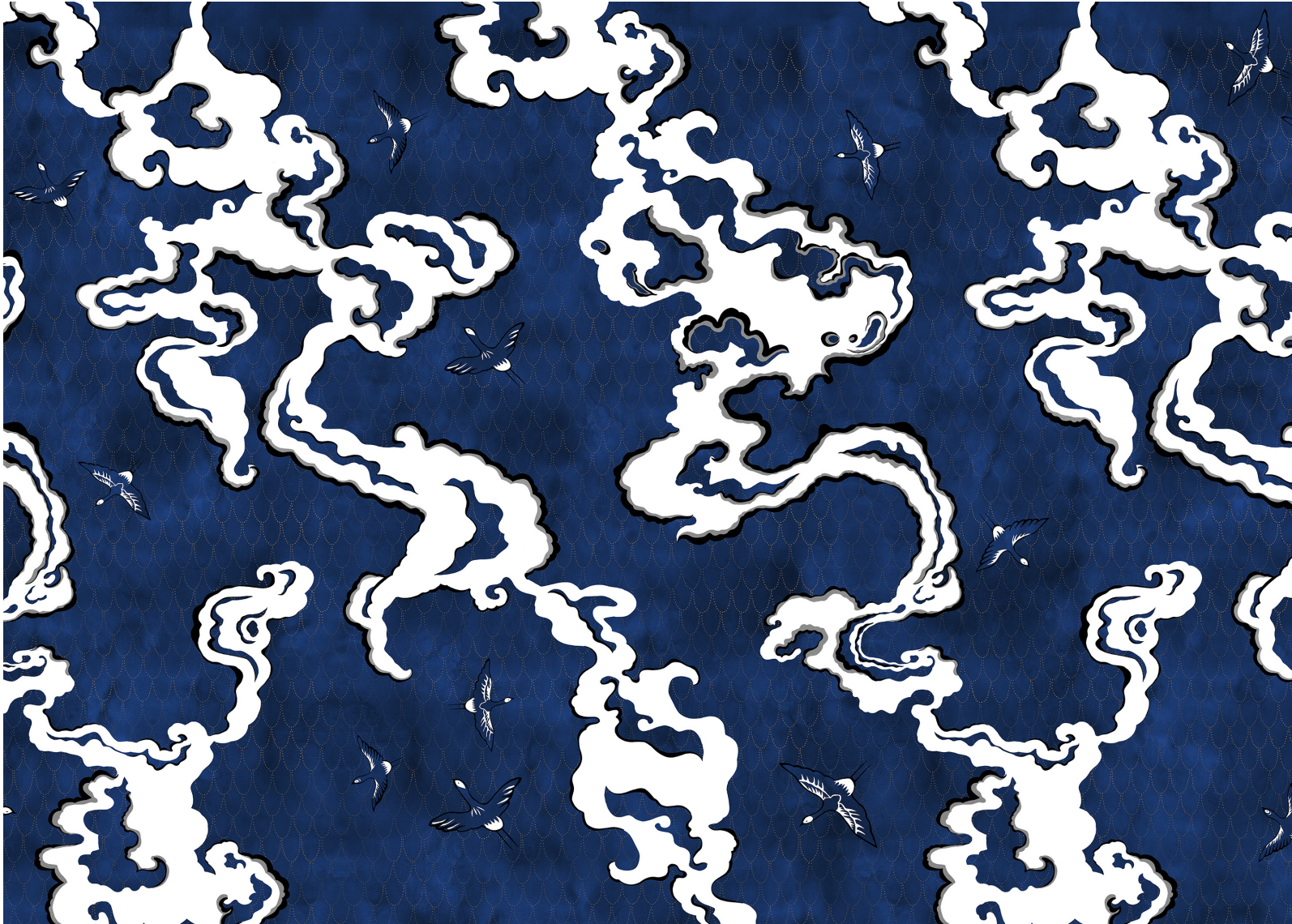


IMAGE Oceanic in Indigo Sea



# Oceanic T004

Fromental wallcoverings are hand-made to order, tailored for each room. From supplied elevations and floor plan we will place the design and panel seaming to ensure optimal installation.

## Technical information

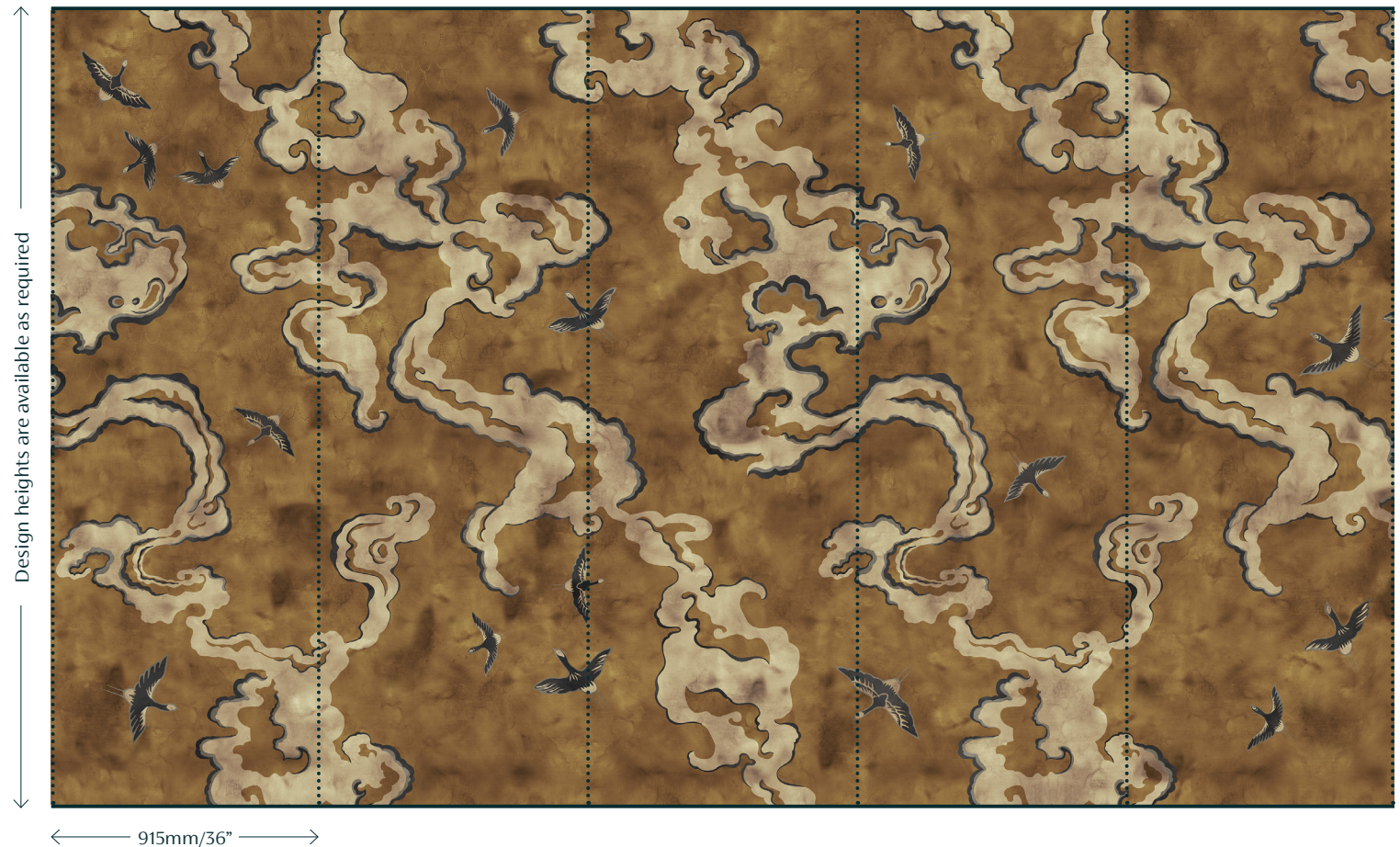
### Material and Technique

Printed on hand-brushed linen, hand-gilded linen, hand-gilded paper and dupion silk depending on colourway.

### Dimensions

**Height** - Panels are supplied 150mm/6" higher than specified wall height. Standard panel height is up to 3000mm/10ft. Taller panels are available with a surcharge.

**Width** - Standard panel width 915mm/36" plus 25mm/1" trim

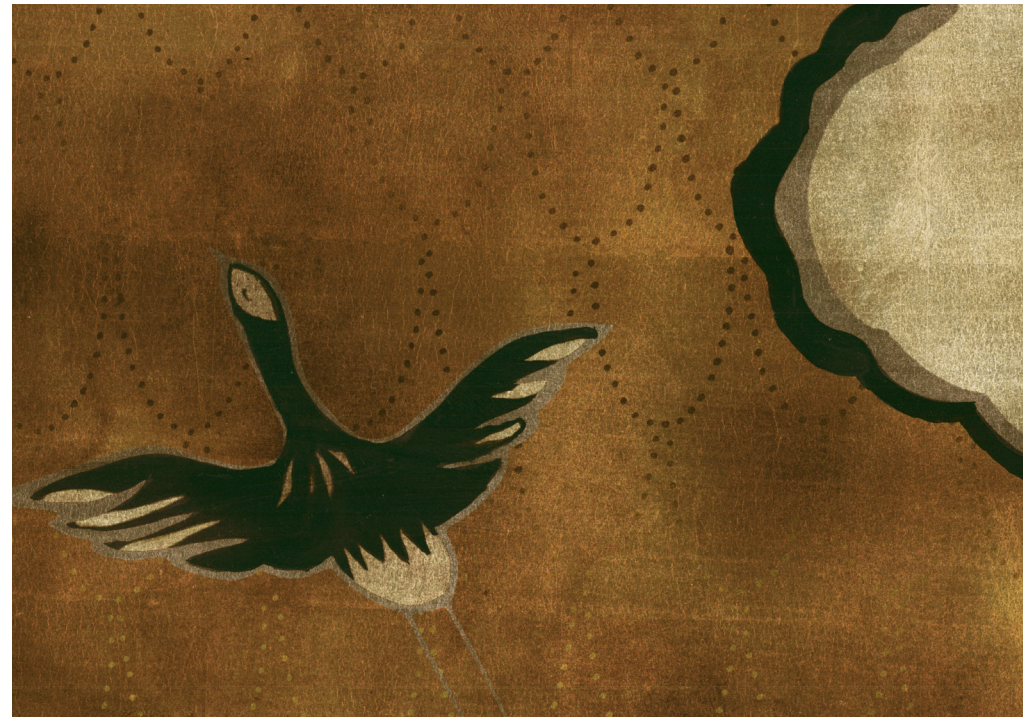




# Colourways

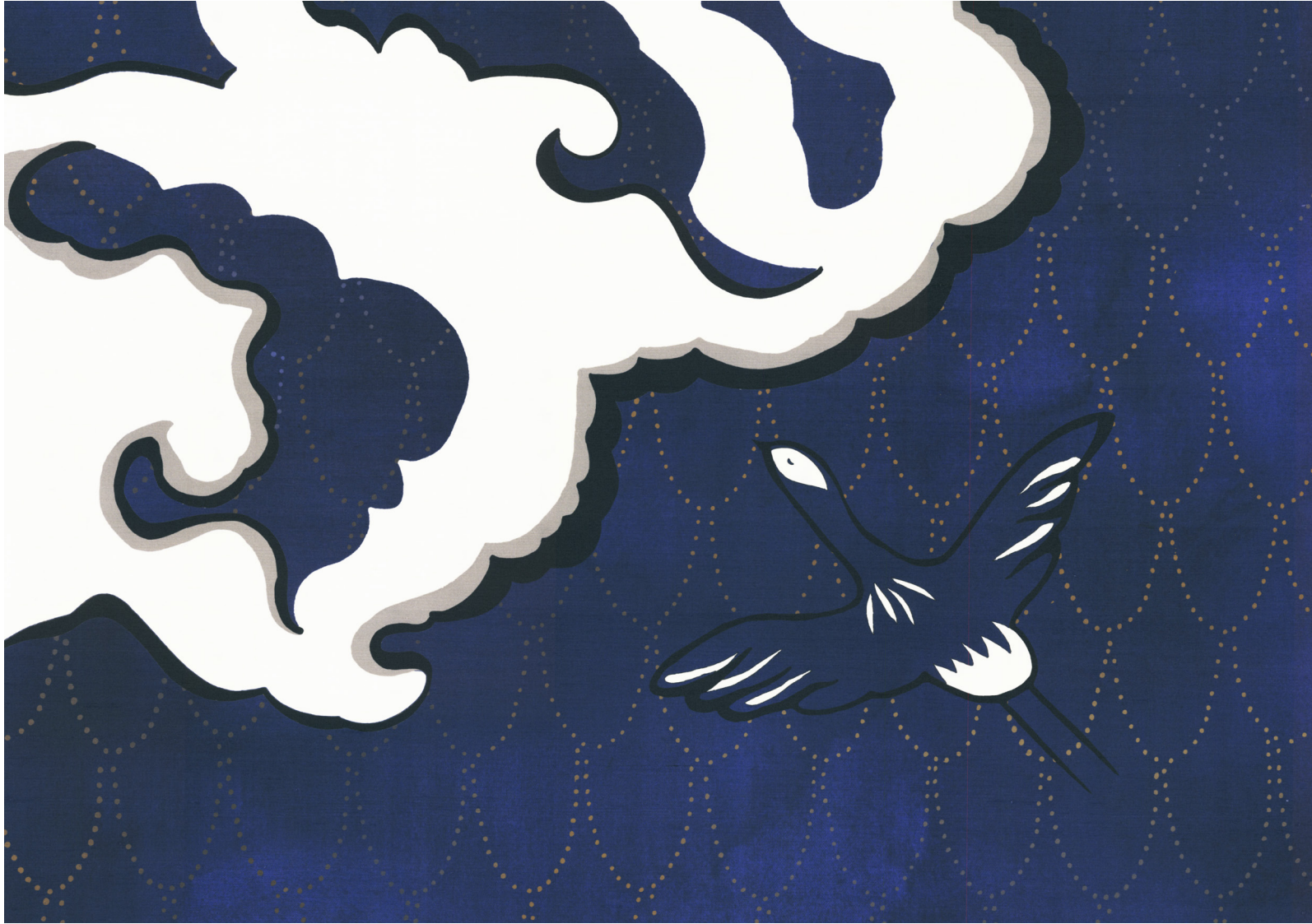


01 Indigo Sea on Dupion Lepiota



02 Sepia Sky on Gilded Paper

FROMENTAL



Oceanic in Indigo Sea