

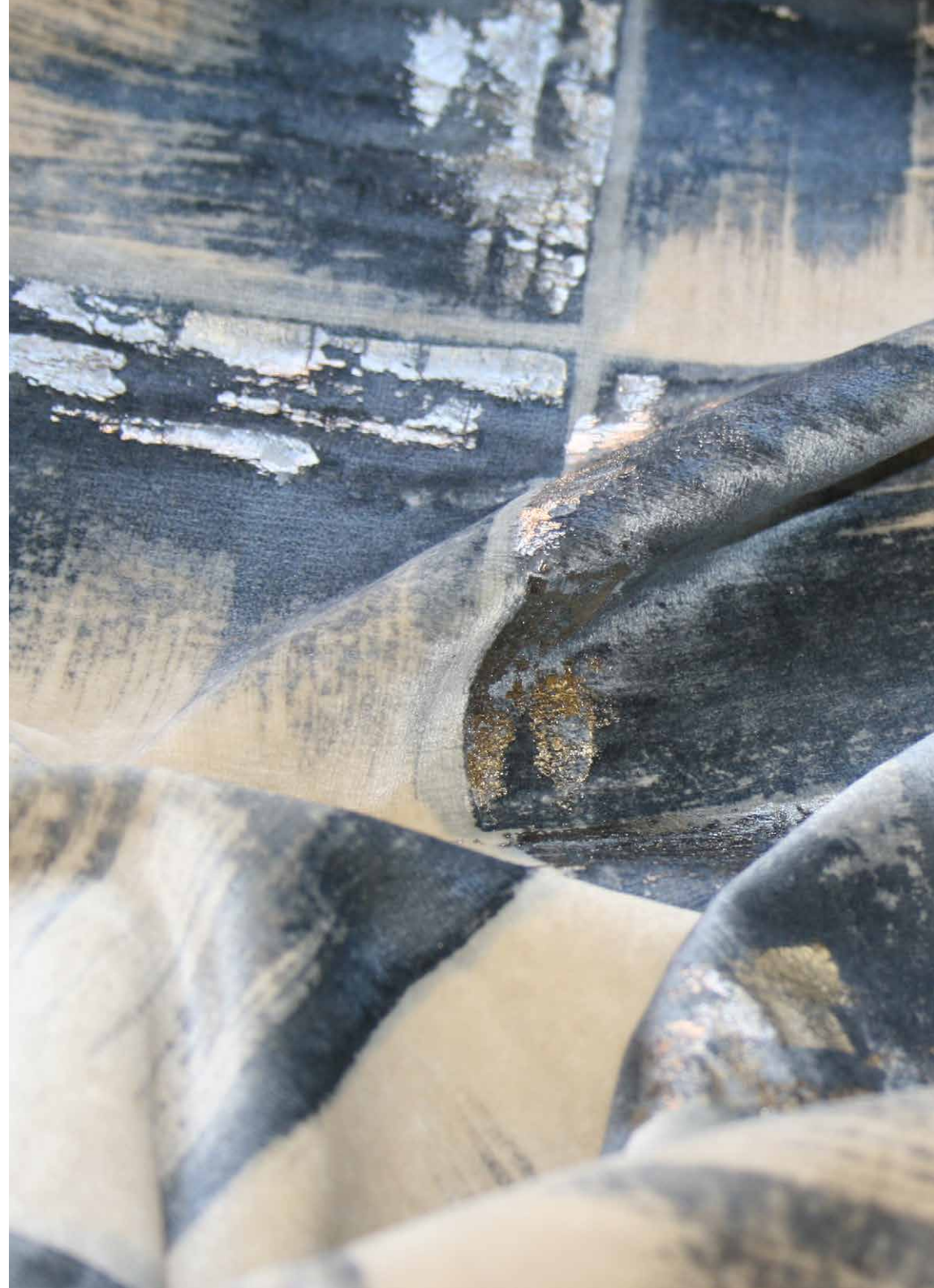
FROMENTAL

Ukiyo-e Block
Velvets



Made famous by Hokusai and Hiroshige, the delicate colours and bold graphics of japanese woodblock prints could not fail to inspire this velvet design.

FRONT COVER IMAGE Ukiyo-e in Storm Blue
Credit: Elle Decor
RIGHT-HAND IMAGE Ukiyo-e in Storm Blue



“Block” the first design in our ukiyo-e fabric collection, is hand painted and gilded onto fine Italian velvet.



RIGHT-HAND IMAGE Close-up of Ukiyo-e in Puce

Ukiyo-e Block V004

Fromental wallcoverings are hand-made to order, tailored for each room. From supplied elevations and floor plan, we will place the design and panel seaming to ensure optimal installation.

Technical Information

Material and Technique

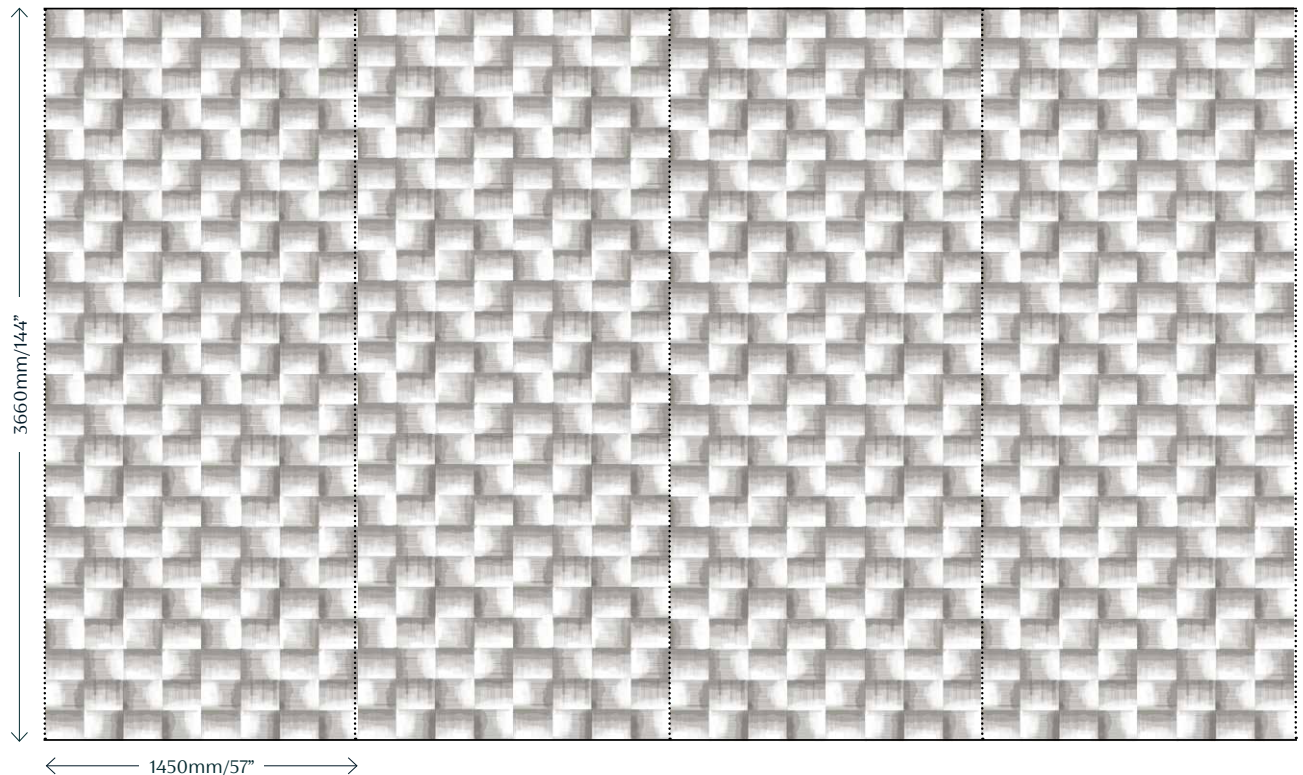
Hand-painted and hand-embellished onto paper-backed velvet.

This is our standard Goldoni layout. The processes and techniques used to make this can be applied to create a custom layout

Dimensions

Height - Panels are supplied 300mm/12" higher than specified wall height. Standard panel height is up to 4300mm/14ft. Taller panels are available with a surcharge.

Width - Standard panel width 1450mm/57" plus 15mm/ 1/2" trim.



Colourways



01 Storm Blue



04 Puce

FROMENTAL



Ukiyo-e in Storm Blue